

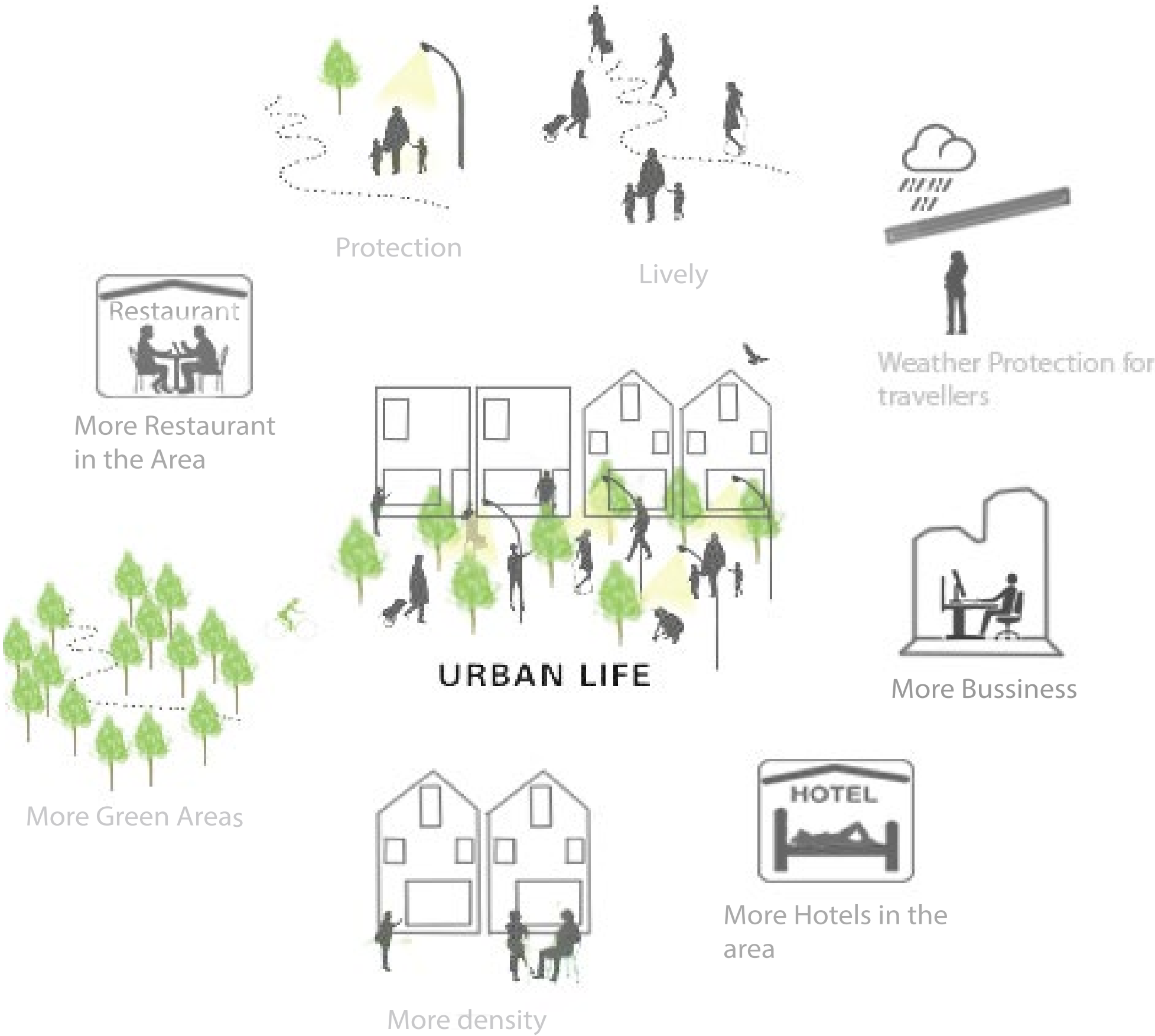


CULTURE URBANITY

TRAIN STATION LVIV- URBAN TRANSFORMATION

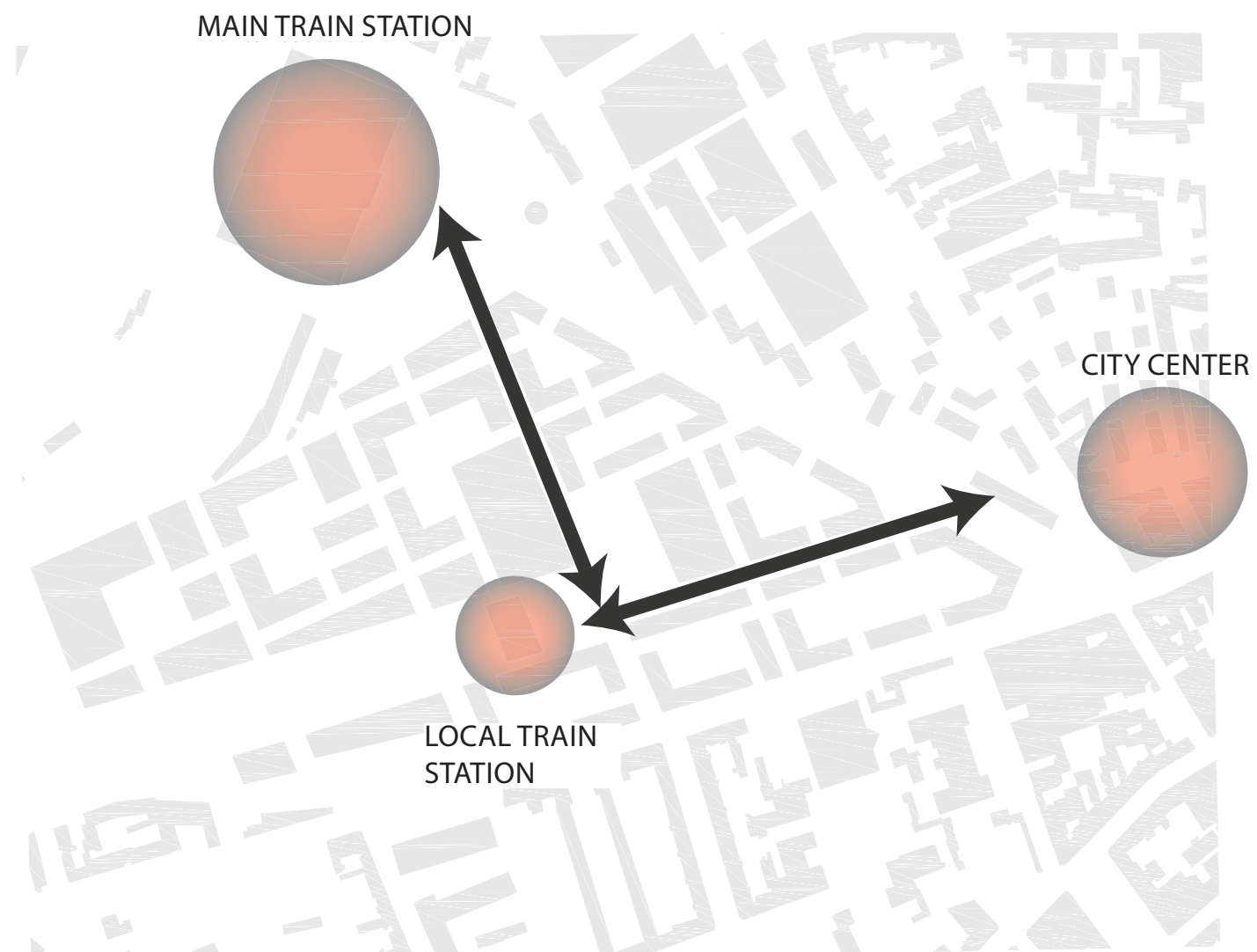


GOALS

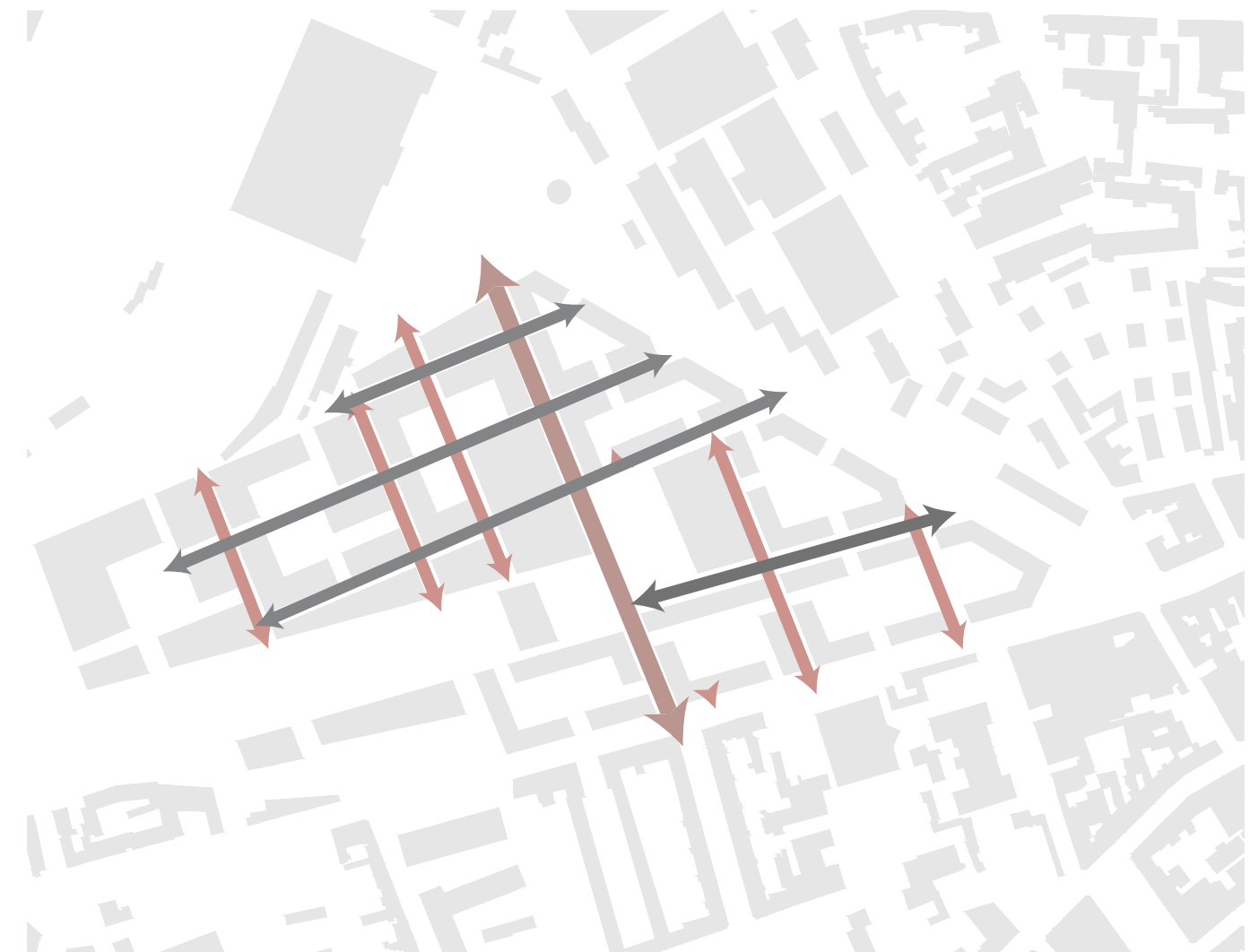


CONCEPT

MAIN AXES

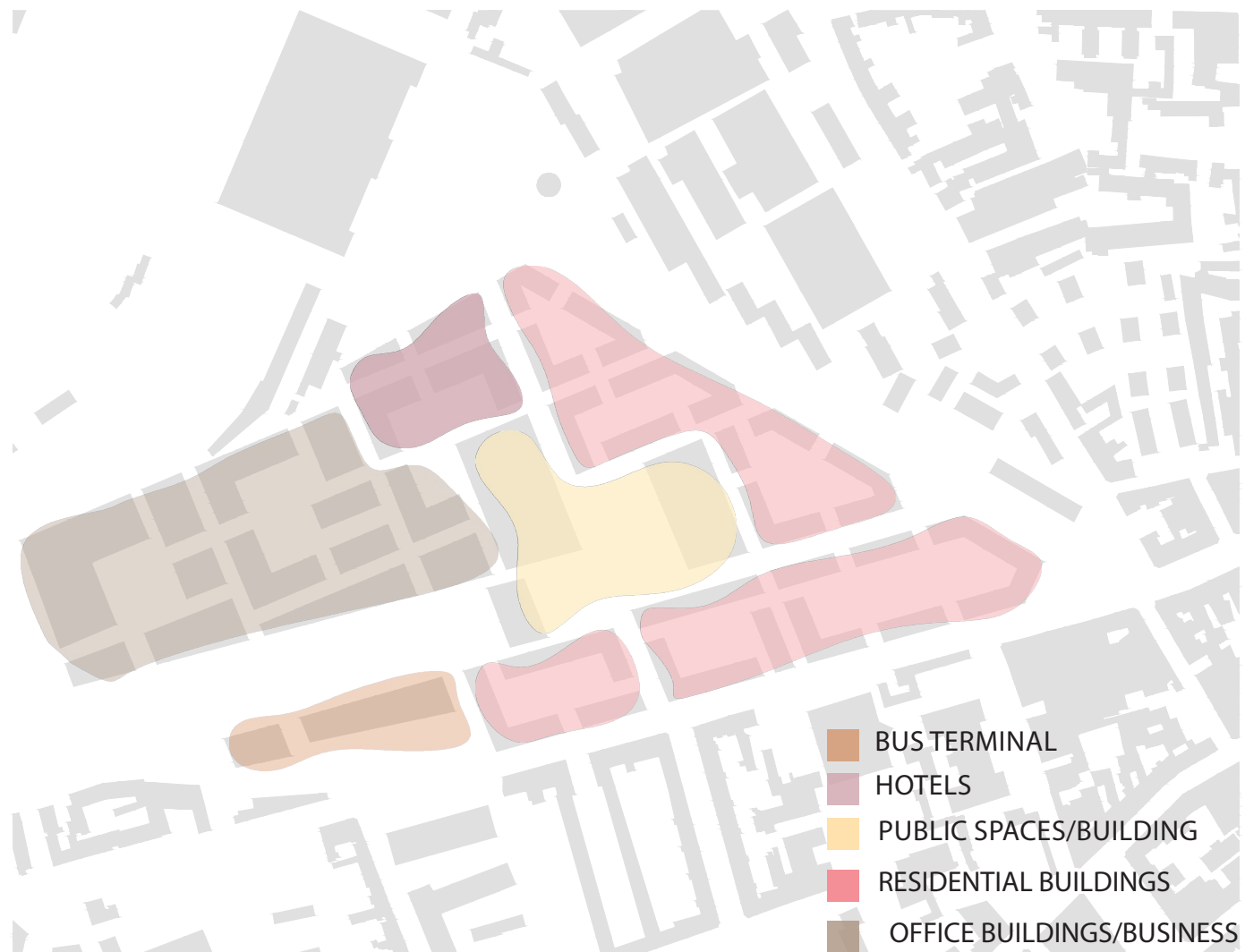


SECONDARY AXES

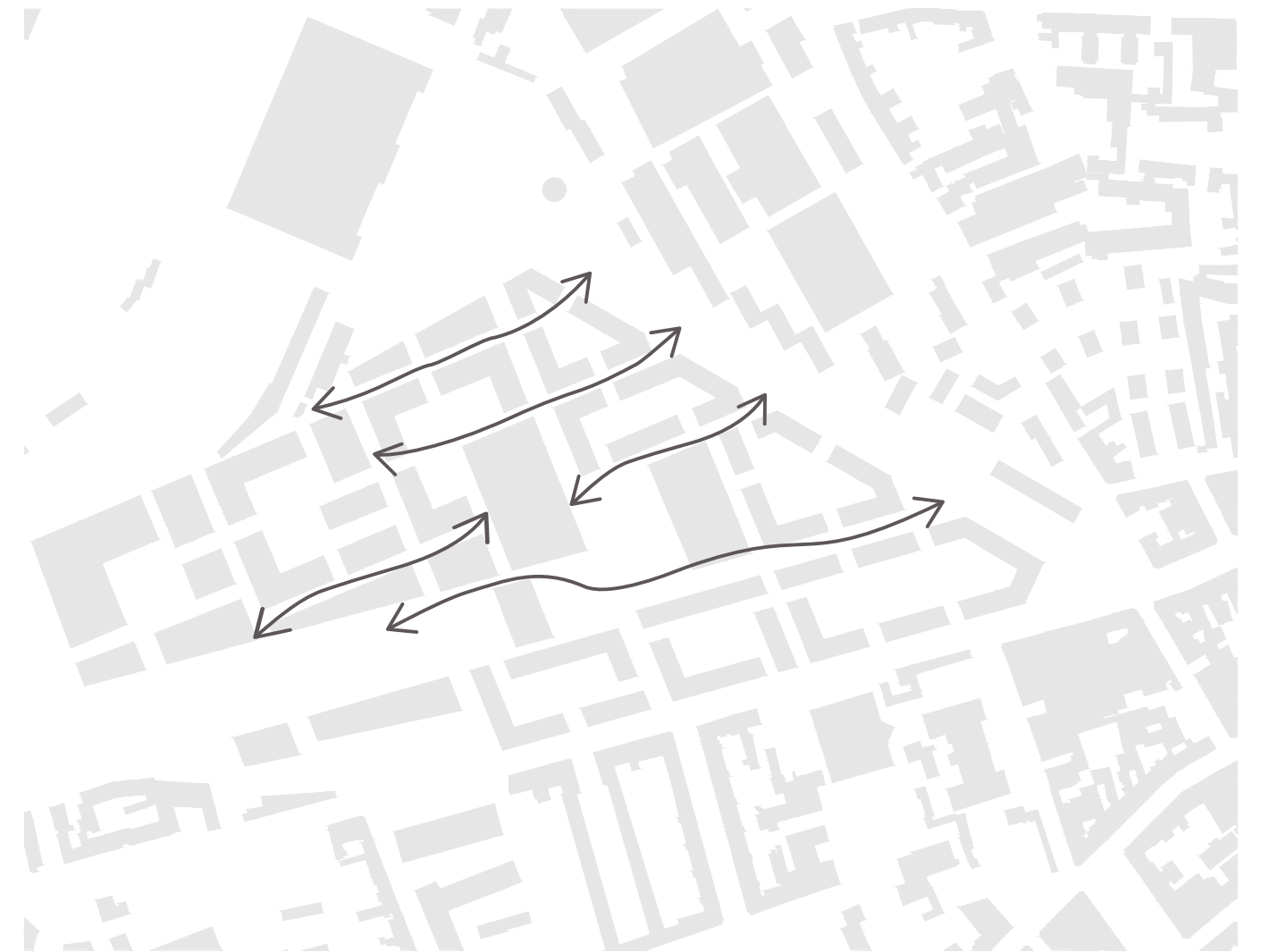


CONCEPT

FUNCTIONS ZONES



VENTILATION OF THE QUARTERS

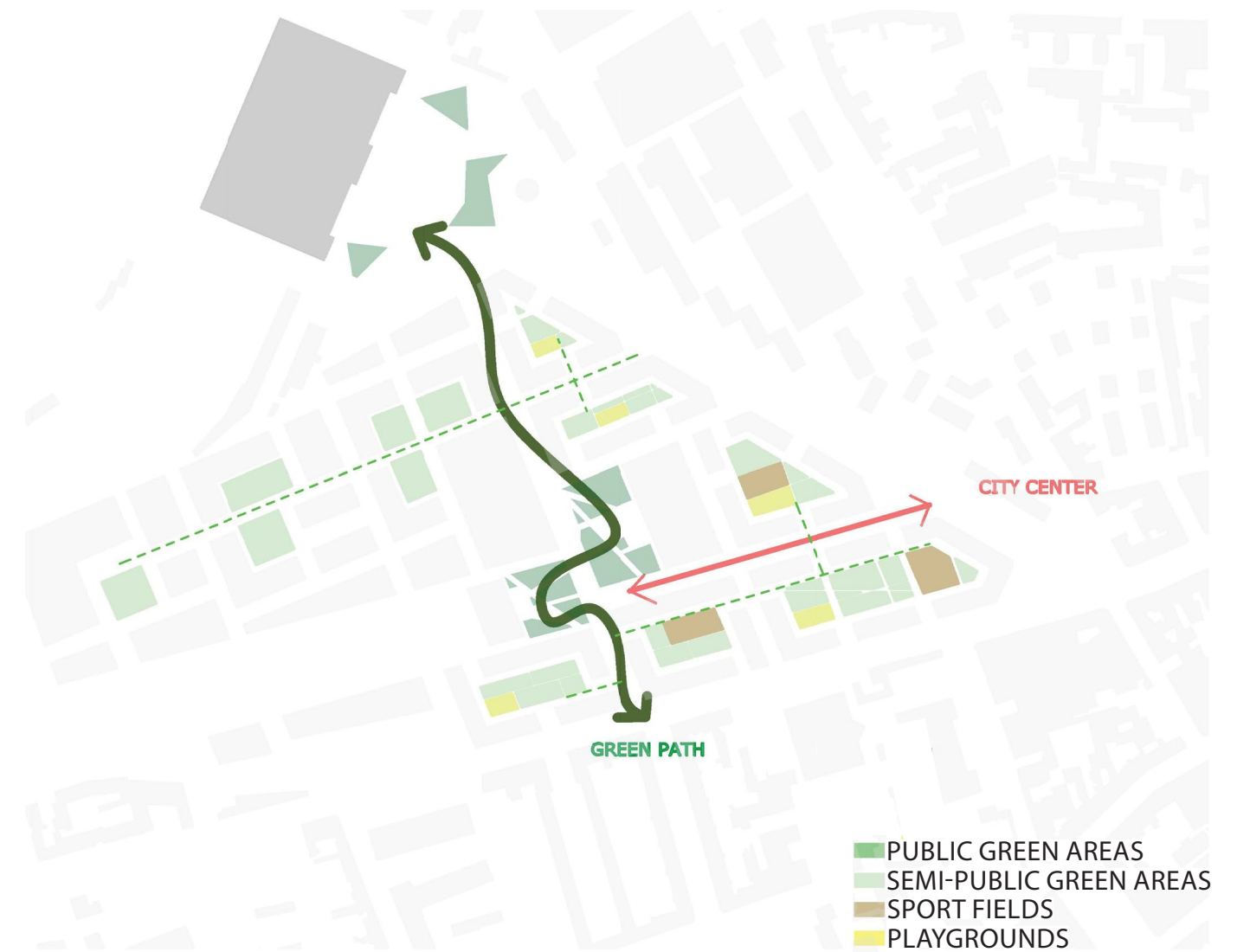


CONCEPT

ATTRACTORS AND CONNECTORS



PUBLIC AND GREEN SPACES



MASTERPLAN



FUNCTIONS

FUNCTIONS IN GROUND FLOOR



- | | | | |
|-------------|-----------------------|-----------|-----------------------|
| ATELIERS | STUDENT ACCOMMODATION | MUSEUM | OFFICE BUILDING |
| BUS STATION | HOTEL | MEDIATHEK | RESIDENTIAL BUILDINGS |

FUNCTIONS IN FIRST FLOOR



- | |
|------------------------|
| SHOPS |
| REGIONAL TRAIN STATION |

ATMOSPHERE

1. MAIN TRAIN STATION SQUARE



4. MEDIATHEK



SECTION



MODEL

