

PUBLIC HEART

Vyhovskoho, Lviv - Ukraine

Vanessa Keiblinger, Florian Resch

Vyhovskoho, Lviv - Ukraine

goals

Vyhoskoho is a district west of the old town of Lviv. It was built in the 1960s and 70s and thus belongs to the post-war architecture. The task was to deal with the location and the architecture and to define an area which could be upgraded by our interventions.

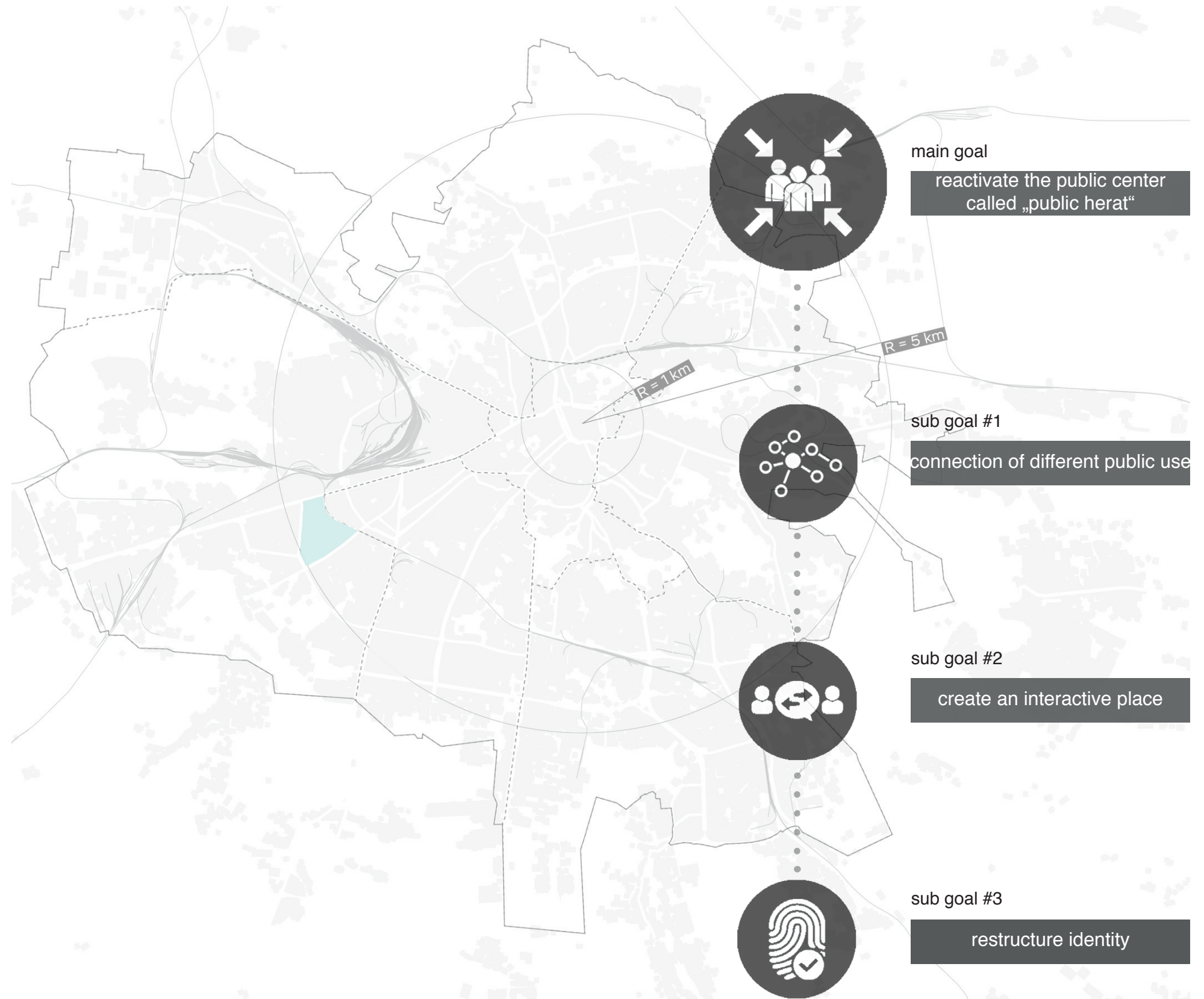
We chose an area in the northern part of Vyhovskoho where some years ago a kind of public centre was established. At the moment it is no longer there and with this ulterior motive, our main goal of the project, namely the reactivation of the public center, called „Public Heart“, was born.

The aim is to create a public centre. It should be for the inhabitants of Vyhovskoho as well as for those of the surrounding buildings.

The first sub goal of us is „the connection of different public uses“. It will be a place where different uses can be combined, from public uses such as shops or restaurants to offices and ultimately housing. This is intended to mix the residents, young and old meeting each other.

At this point we come to the next sub goal, „the creation of an interactive space“. It should become a place where people meet, exchange ideas and enjoy spending their time. A place for everyone, whether young or old, poor or rich, etc.

The last subgoal is to „integrate the identity of the place“ into the new concept. It was important to us that the new part should not form a foreign body in the existing structure, but that it should merge with the new quater by sensitively integrating familiar structures, like little markets or upgrading the existing forest. Residents should feel at home.

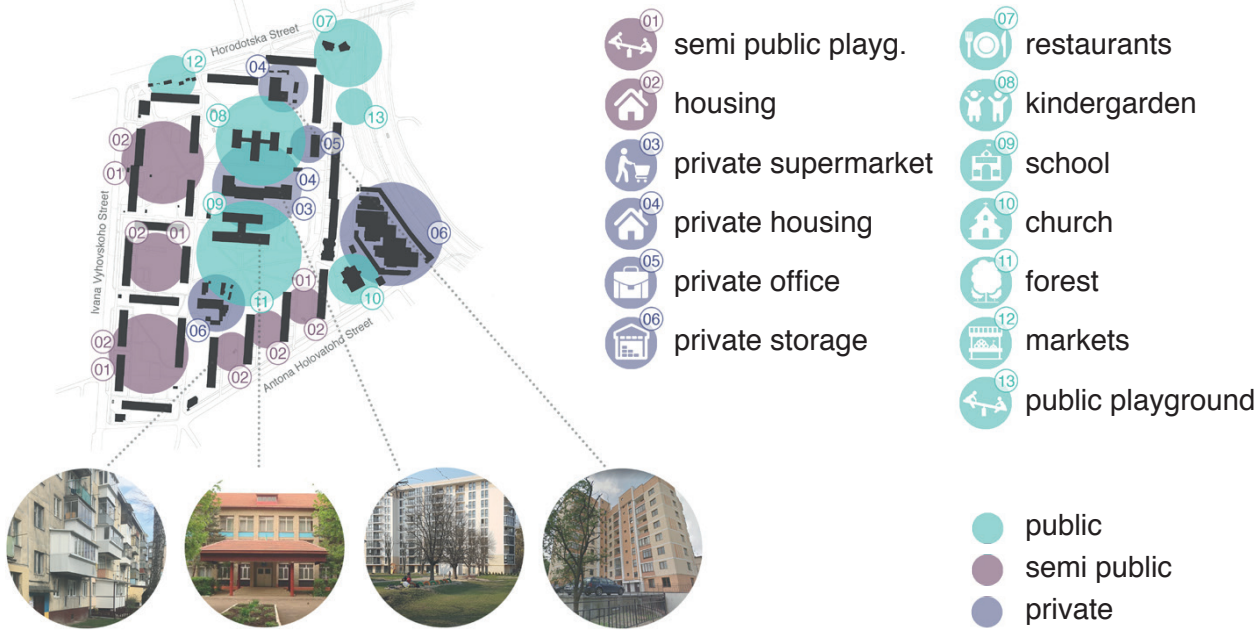


panorama section

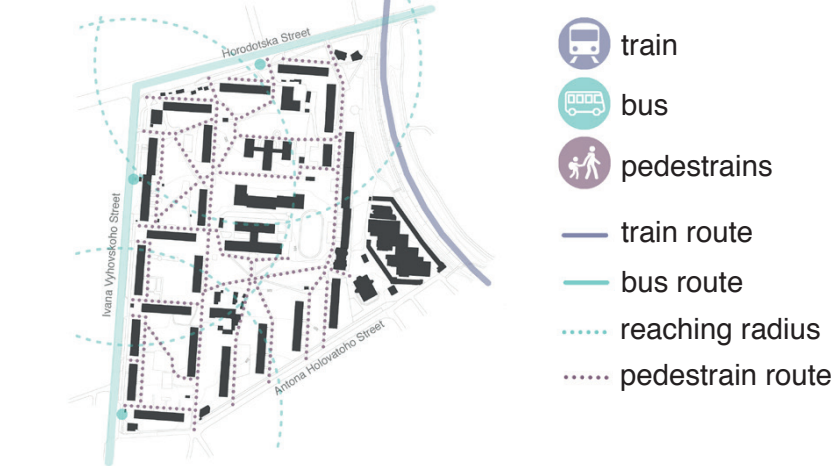
analysis and concept

analysis

... of spaces



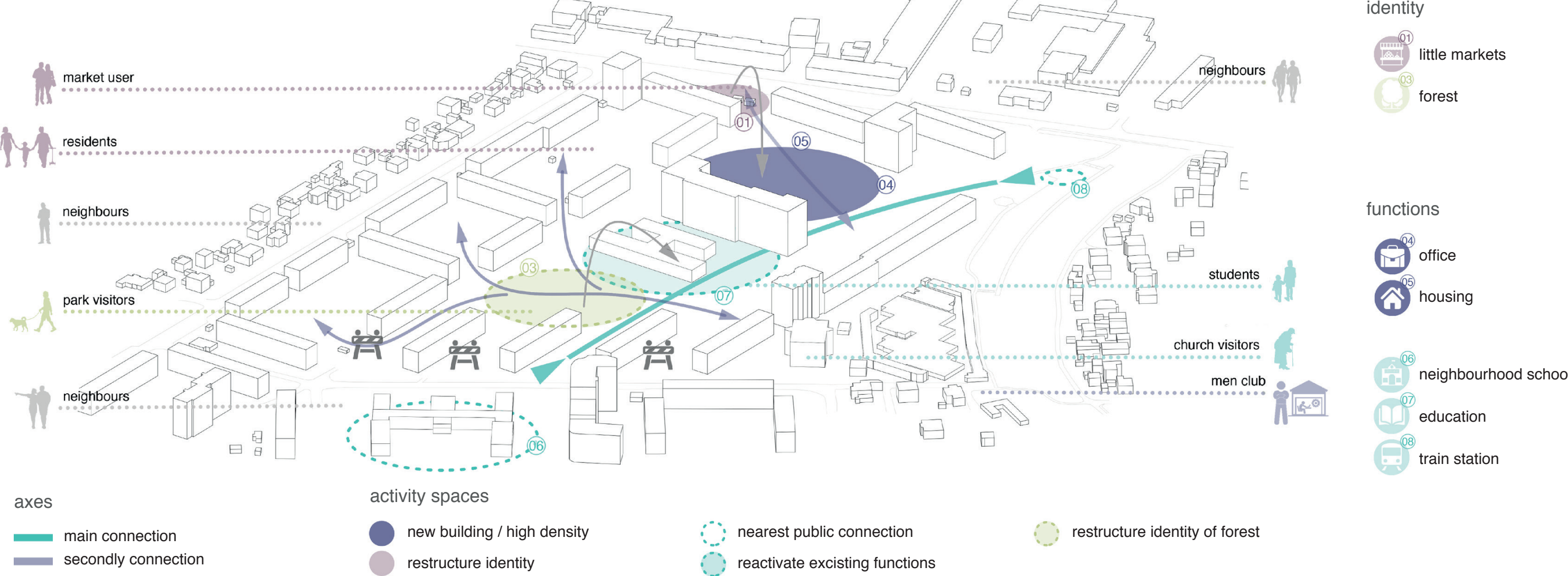
... of mobility



... of identity

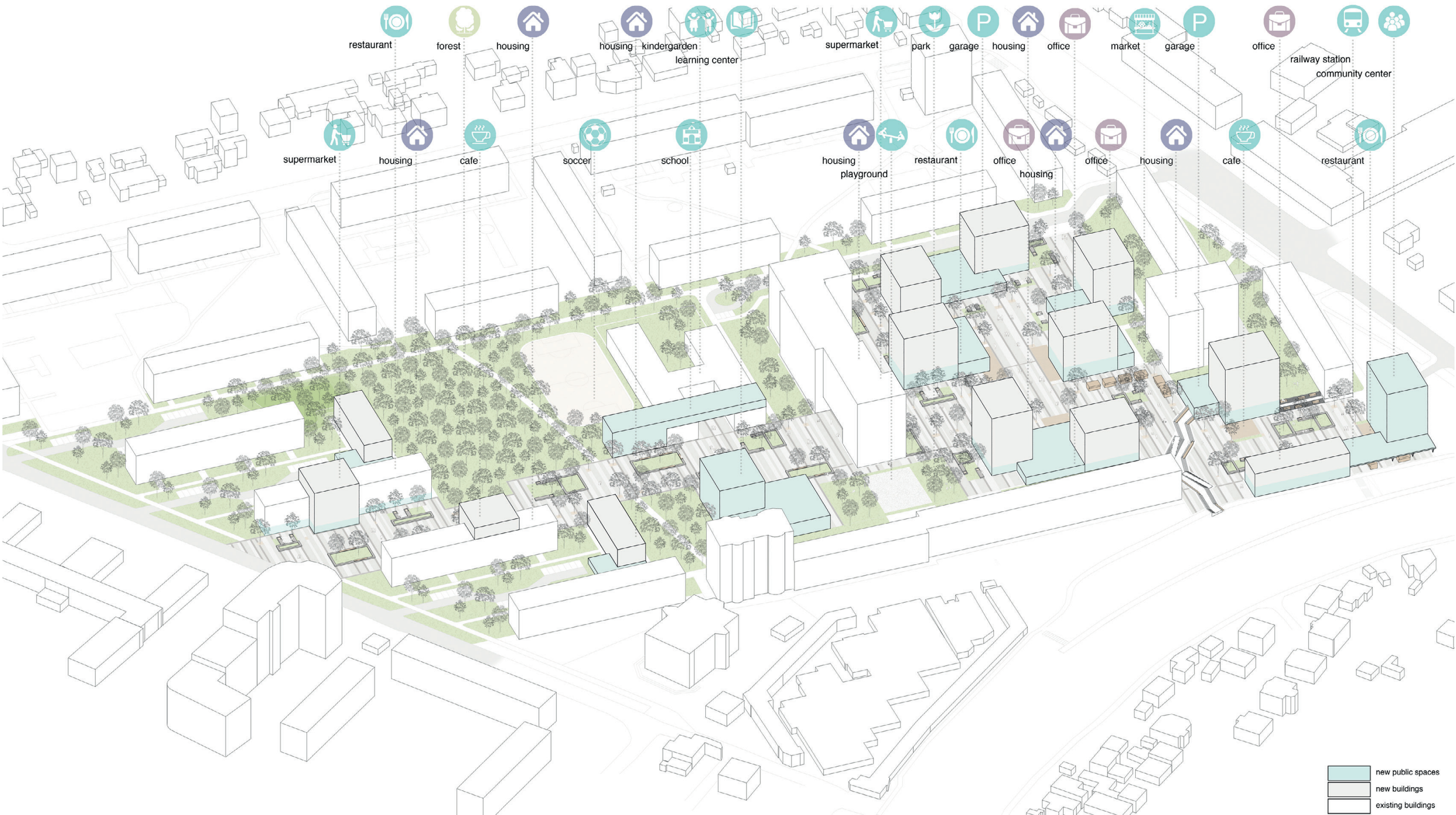


concept



final design

axonometry of the new building and free space arrangement



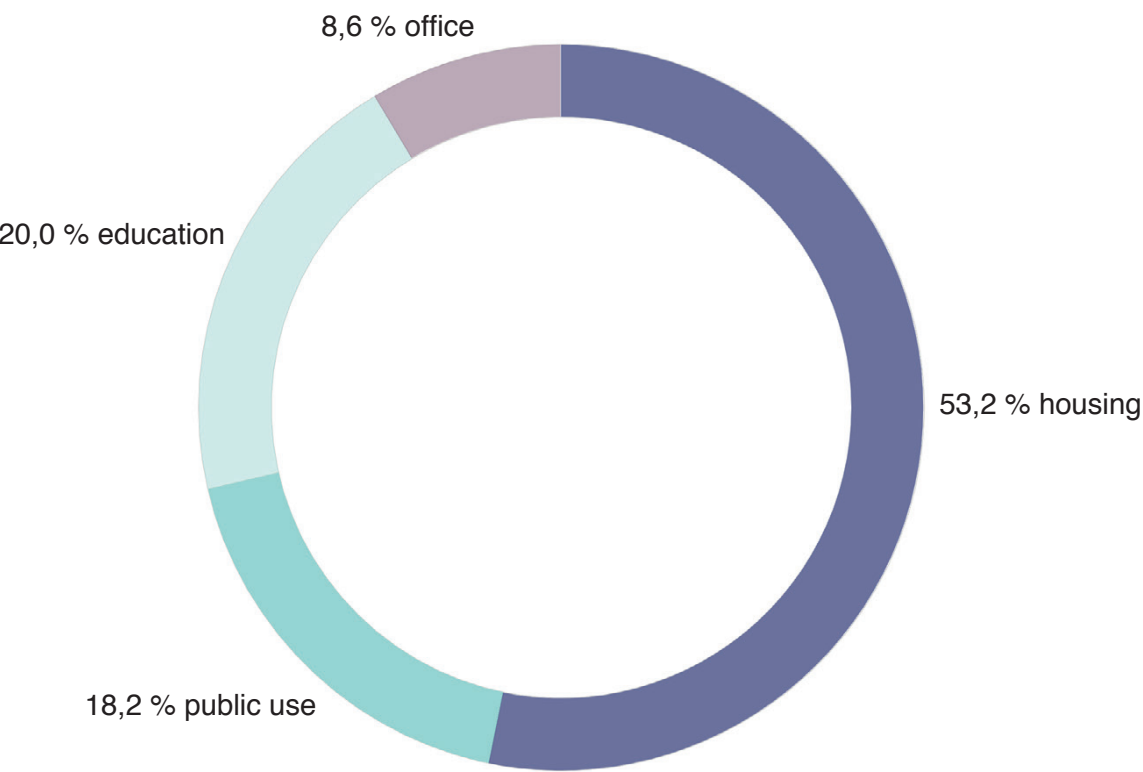
design plan & hard facts

overview of acting area

living space: 29.856 m²
office space: 4.817 m²
public space: 10.230 m²
education space: 11.207 m²

base area: 1-2 floors
building hight: 4-9 floors
roof tops: 12-30 meters

about 280 new flats for Vyhovskoho



sub project #3
Welcome to Vyhovskoho

sub project #2
Vyhovskoho's Heart

GFZ before: 1,4
GFZ now: 2,0

living space: 22.744 m²
office space: 4.817 m²
public space: 8.364 m²

sub project #1
extended LVIVING

GFZ before: 1,0
GFZ now: 1,4

living space: 23.906 m²
public space: 1.866 m²



extended LVIVing

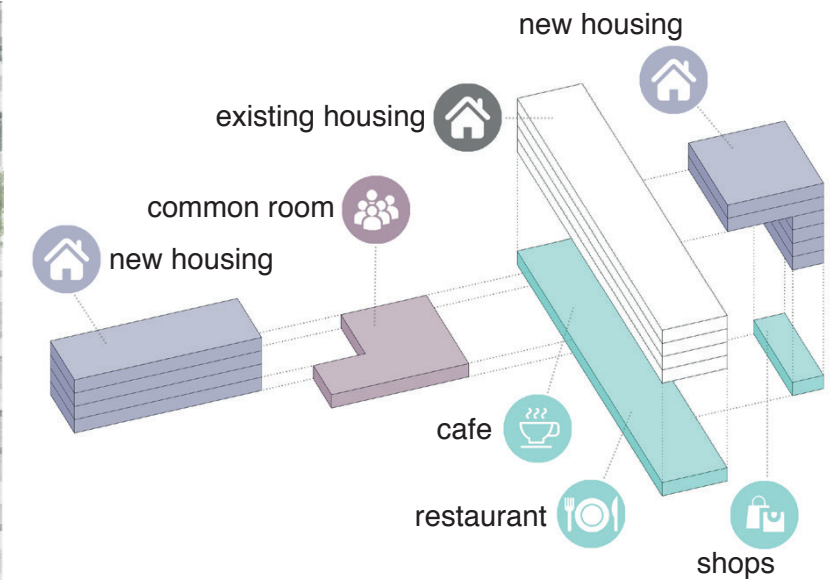
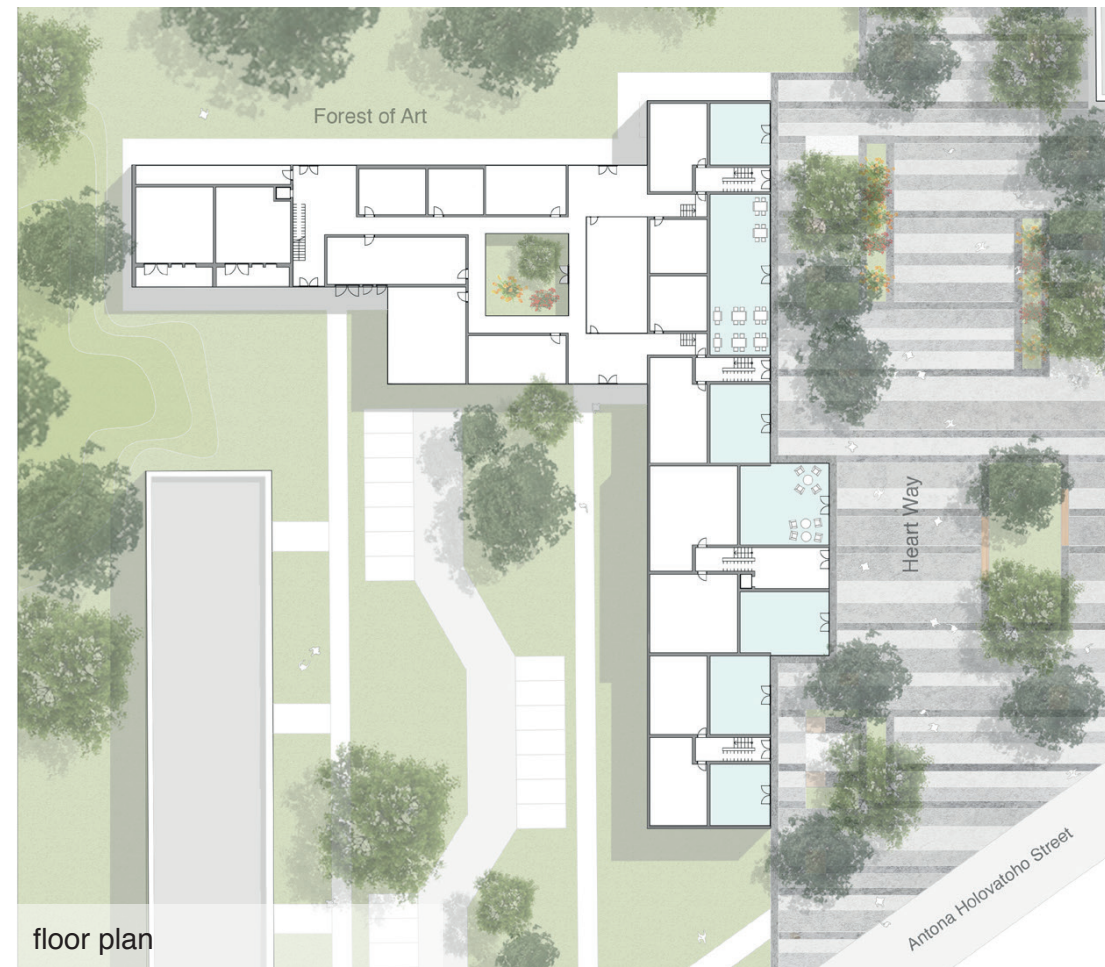
sub project #1

The first sub project of our acting area is part of the connection point to the following part of Vyhovskoho, where the next public spaces are located.

To mark the entrance to the main axis and chance it to a public space, the part of the ground floor oriented to the „Public Way“ is reorganized with public functions, for example shops, restaurant and cafe.

In addition the new base, included a common room and storage for the inhabitants, and the new four storey high building with new living space „close“ the entrances to the „Public Heart“. In order to this people are directed to the main axis.

Last but not least the existing building receives two more floors with new flats on the top and more space oriented to the public axis, not just to save the now missing living space in the ground floor but also to mark the „Heart Way“ another time.



building organisation



Vyhovskoho's Heart

sub project #2

The second sub project is the main part of this urban project in Lviv - the Public Heart of Vyhovskoho. In this area a completely new living and working space is developed.

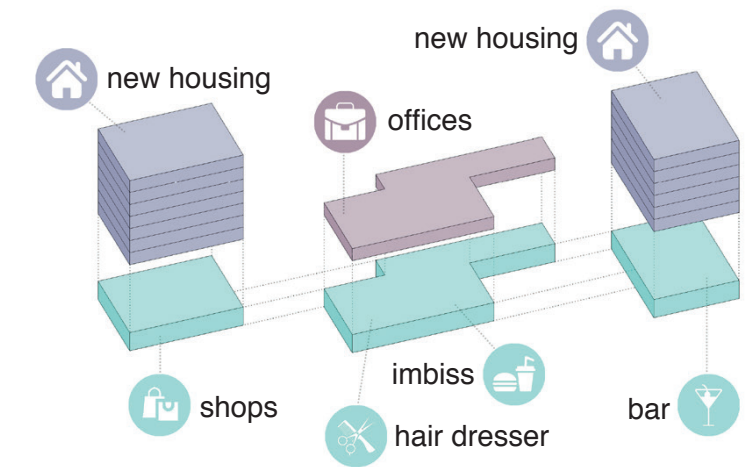
To connect this part with the existing area in the south of our acting area, a three storey high passage is cut out of, the since now, newest building in this area. The connection to the new railway station in the north is designed with some representative, barrier-free sitting stairs.

The special thing about this new place is, that the chosen typologie of the new buildings allows to combine private, semi public and public spaces with a new generously square for the whole area.

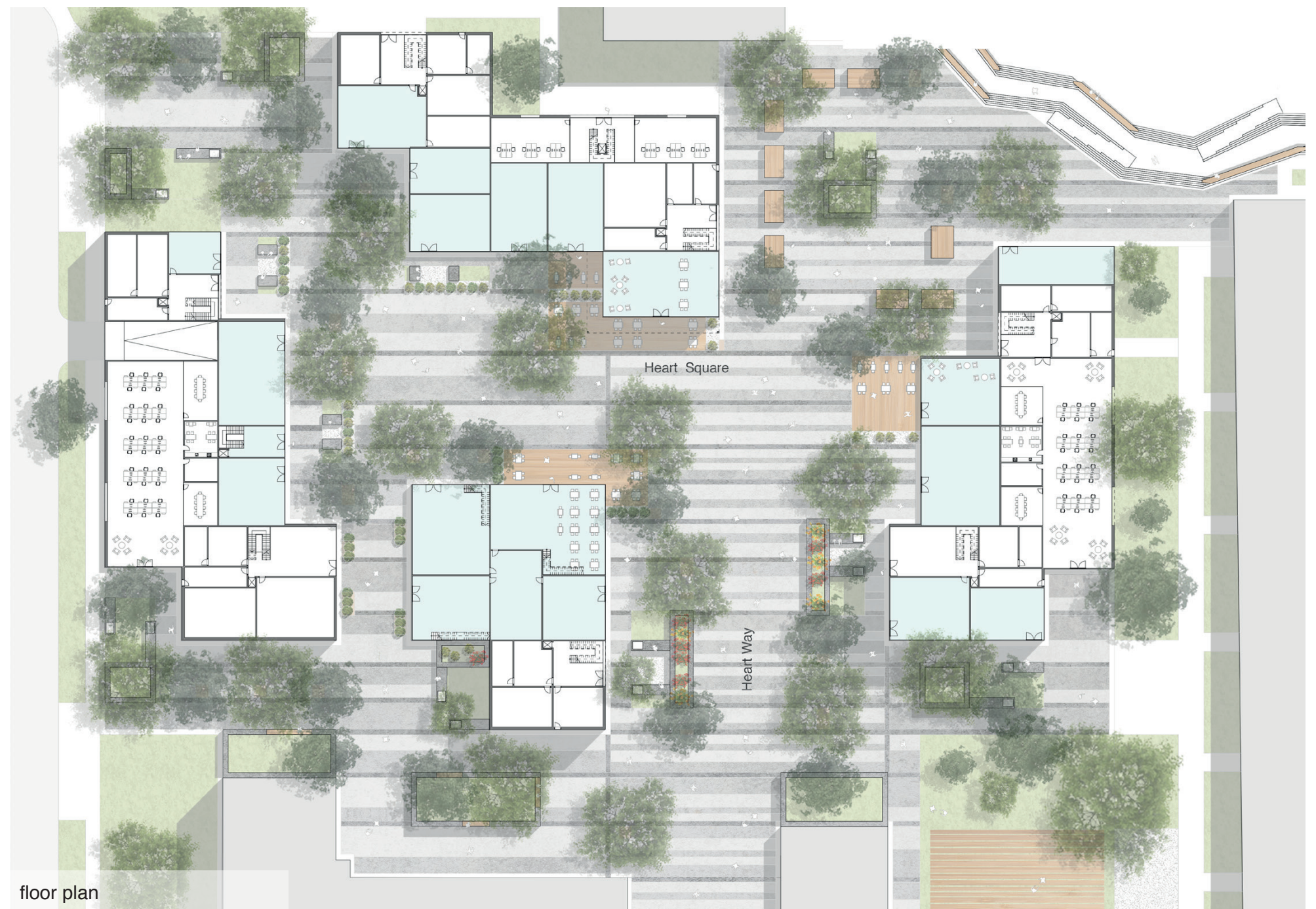
Always a completely public base connects two private, for living space created, high points. Furthermore the rooftop of the base is also connecting these two points with a private garden for inhabitants of this building. On the same floor each of the buildings has a common room to give the people the possibility to interactive. Some kind of private space is also situated on three rooftops of the high points.

Each residential building has some storage space, bike and baby carriage parking spots and waste space in the ground floor. Two of the bases have some co-working space included to give the inhabitants space to work near their homes. To reactivate the public space, there are many different public functions in the ground floor, for example bar, restaurant, shops, supermarket, bike service, gardening center and doctor.

In order to guarantee a higher living quality and better interactive space for the inhabitants the „Heart Square“ is carfree organized. But of course there is still enough parking space planed - the building on the western side includes a underground garage, which can be used by all inhabitants and working people in this area.



example building organisation



Welcome to Vyhovskoho

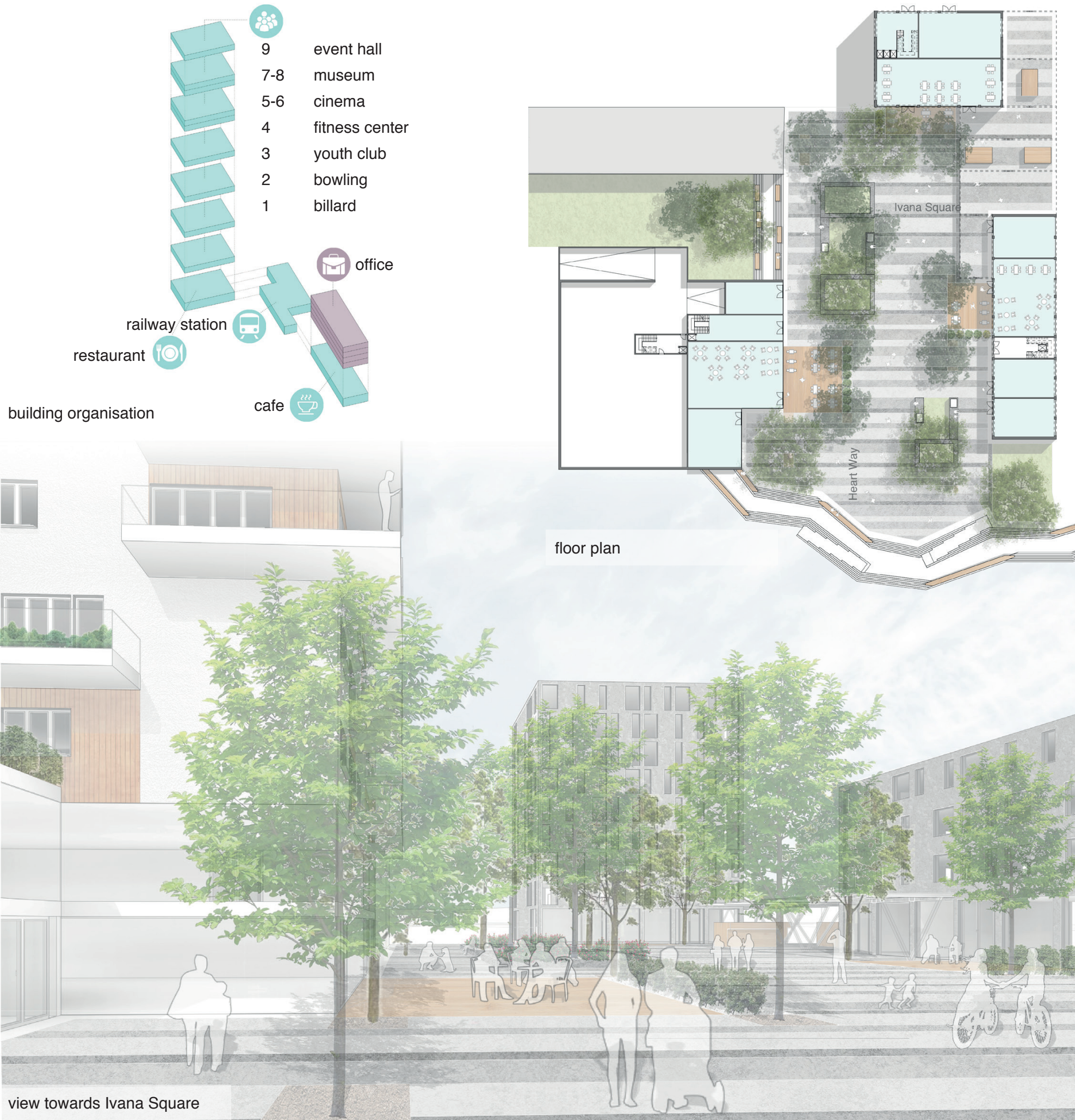
sub project #3

Last but not least the main point to connect Vyhovskoho's Public Heart with the whole city is the new railway station - sub project three in this urban intervention.

To welcome everyone to Vyhovskoho there is another public square, the „Ivana Square“, directly combined with an office building and a leisure center. The leisure center allows inhabitants and visitors to meet up, even on bad weather days. It offers many different types of leisure functions, for example bowling, youth club and fitness center.

The ground floor area is again filled up with public functions, like restaurants, a bar and a supermarket. But there is also some living space in the western oriented building, near the Pubic Heart, which includes the same standards like the other high points.

There is also a underground garage for parking, to keep the cars out of the public area. In contrast to the garage at the Heart Square this one can be used by everyone in Lviv - it's usable for visitors.



atmospheric axonometry

showing sub project #2 & #3

This graphic is presenting the quality of different layers of free and green space for Vyhovskoho's people. The main public space is situated at the ground floor - Heart Square and Ivana Square. But there are also some semi public and private spaces on the rooftops of the buildings with some urban gardening concept.



model photos

