

GREEN TRACKS

„Green Tracks“ is located in Floridsdorf, in the 21st district of Vienna.

The goal of the project is to preserve the spirit of the site with its nature and old railway elements. the main idea for the design work was to combine the existing potential with new build up areas and urban spaces. The man path works as connector on the site, it leads to the three main elements of the project: public space, housing and workshop areas.

The path devides the site from publich to more semi public spaces in between the housing blocks. The ground floor is mainly used for shops, workshops, sport facilities, cafés and all-purpose rooms. The housing blocks are subdivided into three tobpcs: sport children and urban gardening. The old railway-tracks are revitalised and are used for leisure facilites, urban gardening and relaxing zones with wooden furniture. Underneath the old railway-station, becomes now the location for a workshop area with all kind of equipment and infrastructure, which can be used by the inhabitants and the public.

As design objects and medium, there will be used the old railway tracks, as collums or deviding ob-jects to define public spaces. As well as the nature, it will be reflected on the facades of the buildings for design and climatic reasons.



GOALS



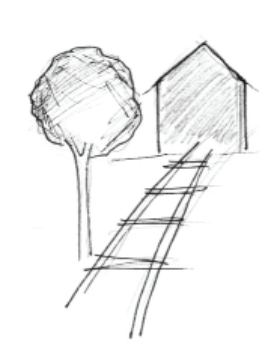
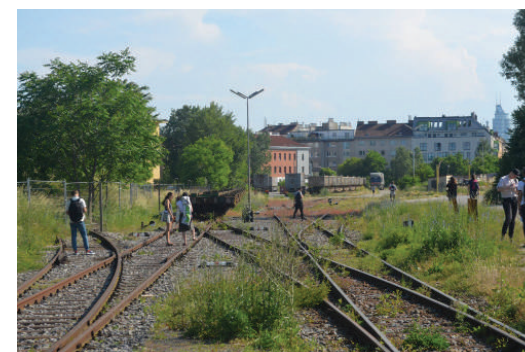
MIX OF FUNCTIONS



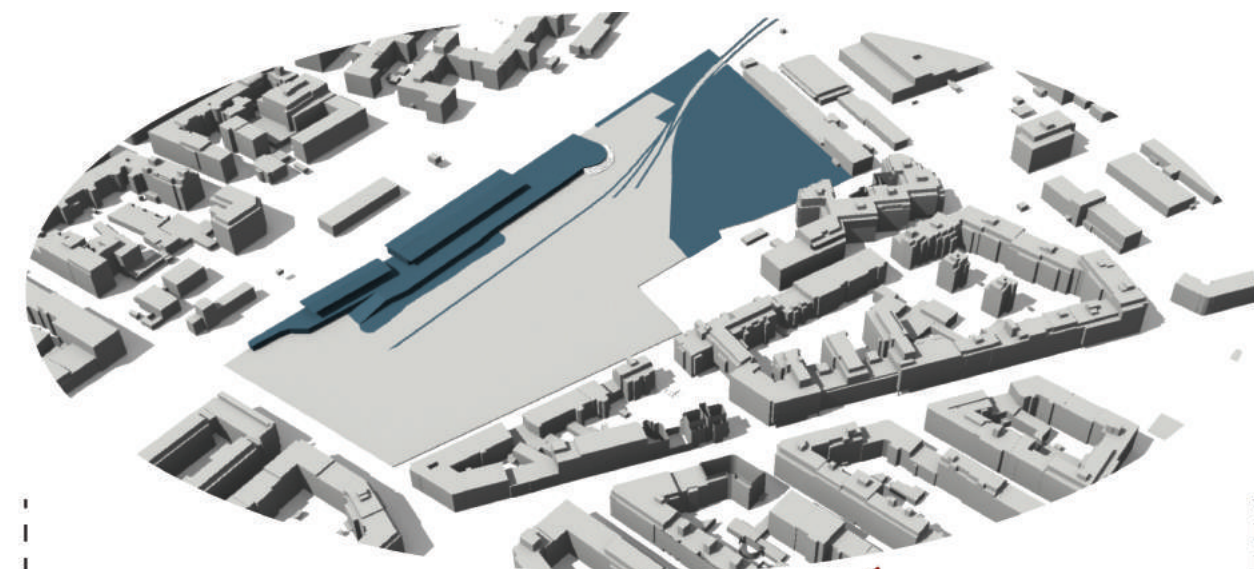
CONNECT THE
NEIGHBOURHOOD



PRESERVE NATURE

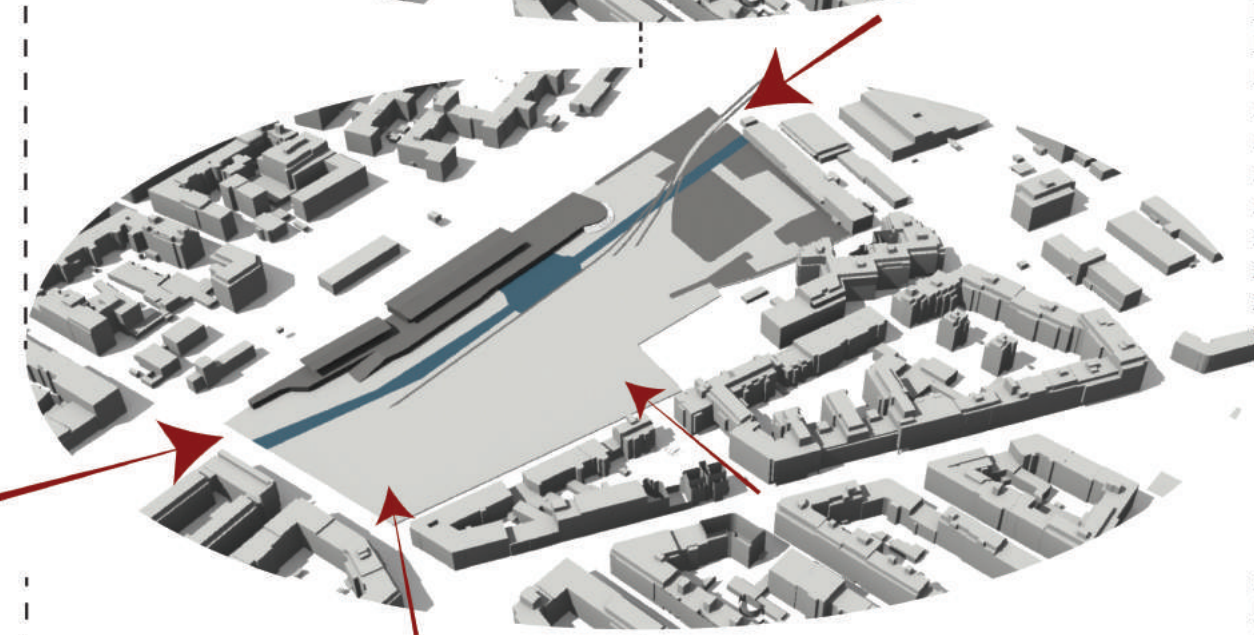
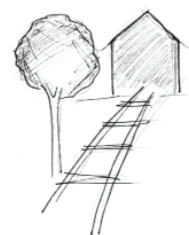


SPIRIT OF THE SITE



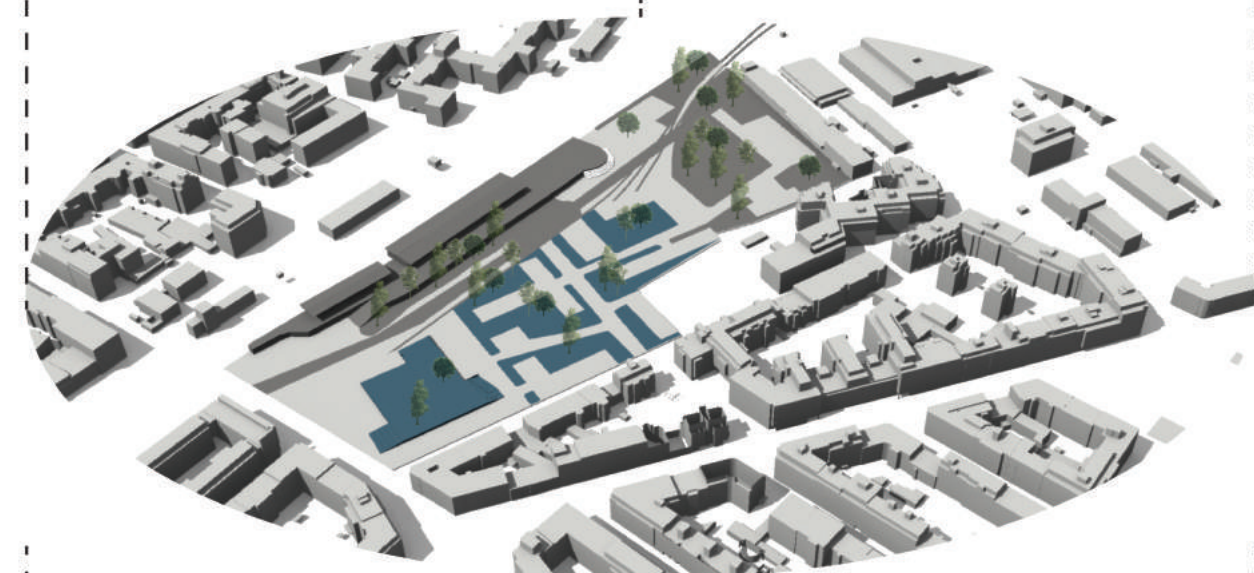
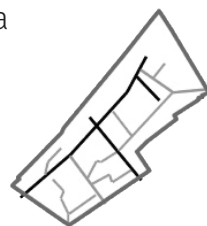
1) EXISTING POTENTIALS

- old railway-tracks
- old railway-station
- green area



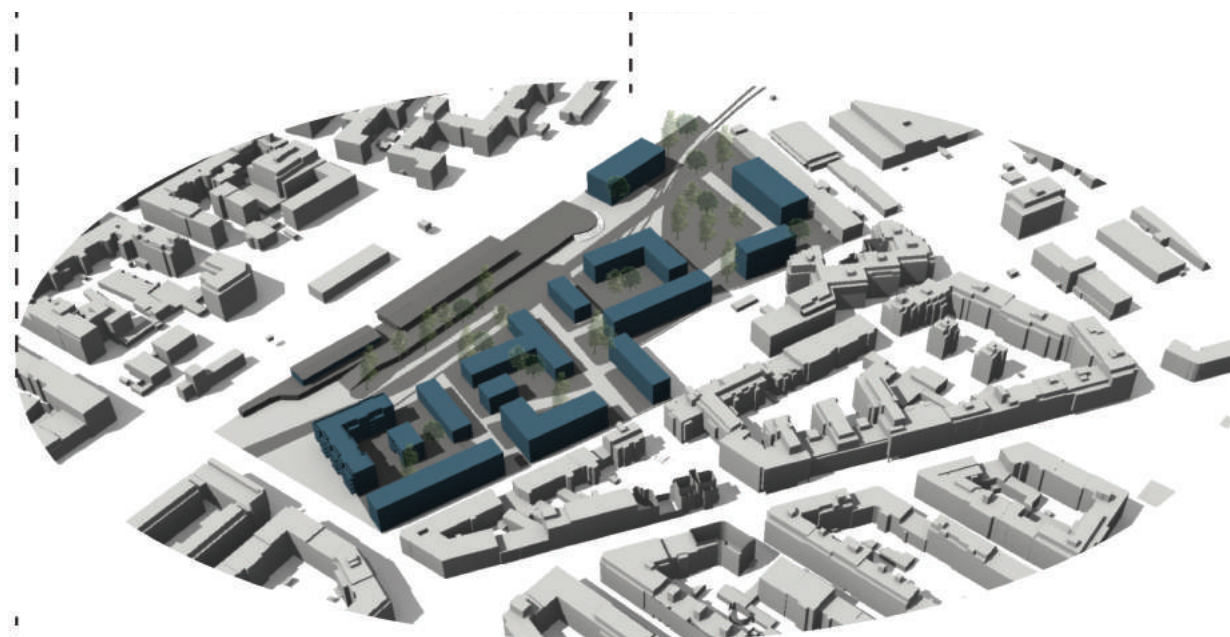
2) ACCESES / WAYS

- adopt direction of tracks for the main path
- create more access to the site
- main path works as story teller, different materials lead to the functions of the built up area



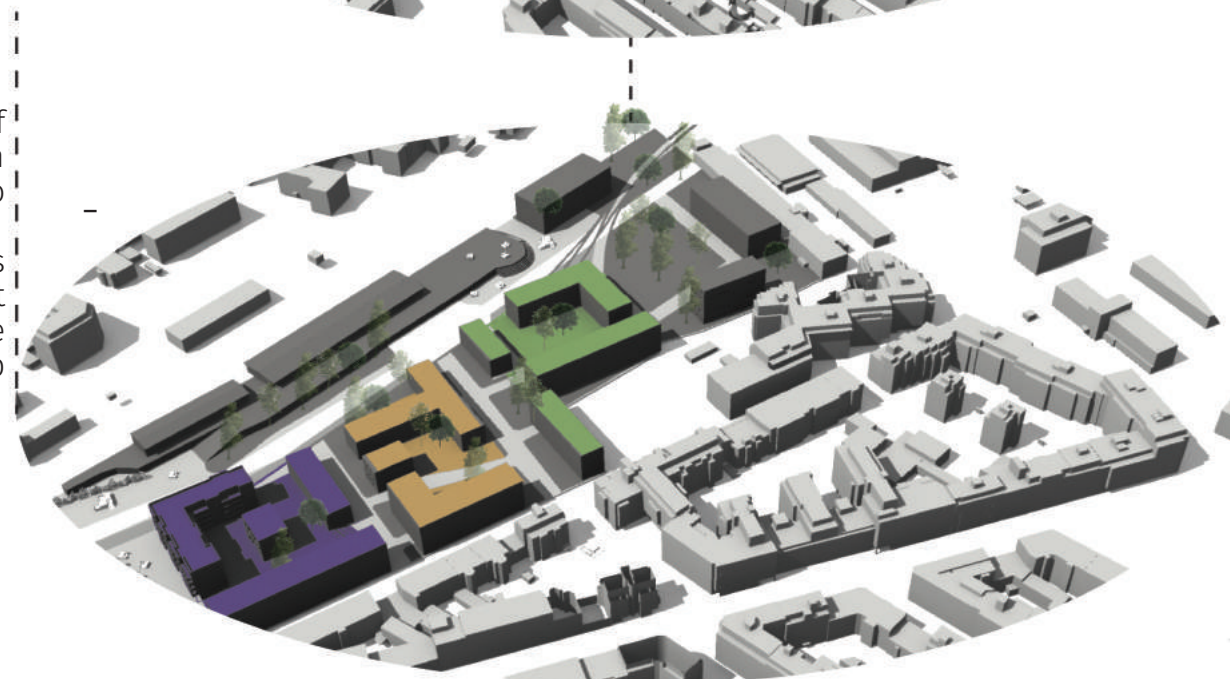
3) EXISTING GREEN SPACE

- tree population
- green areas



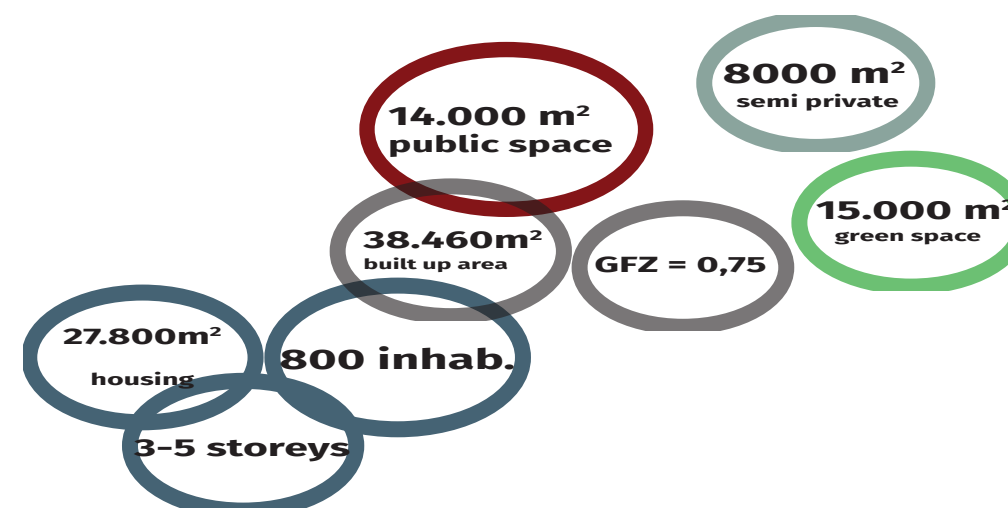
4) URBANISTIC DESIGN

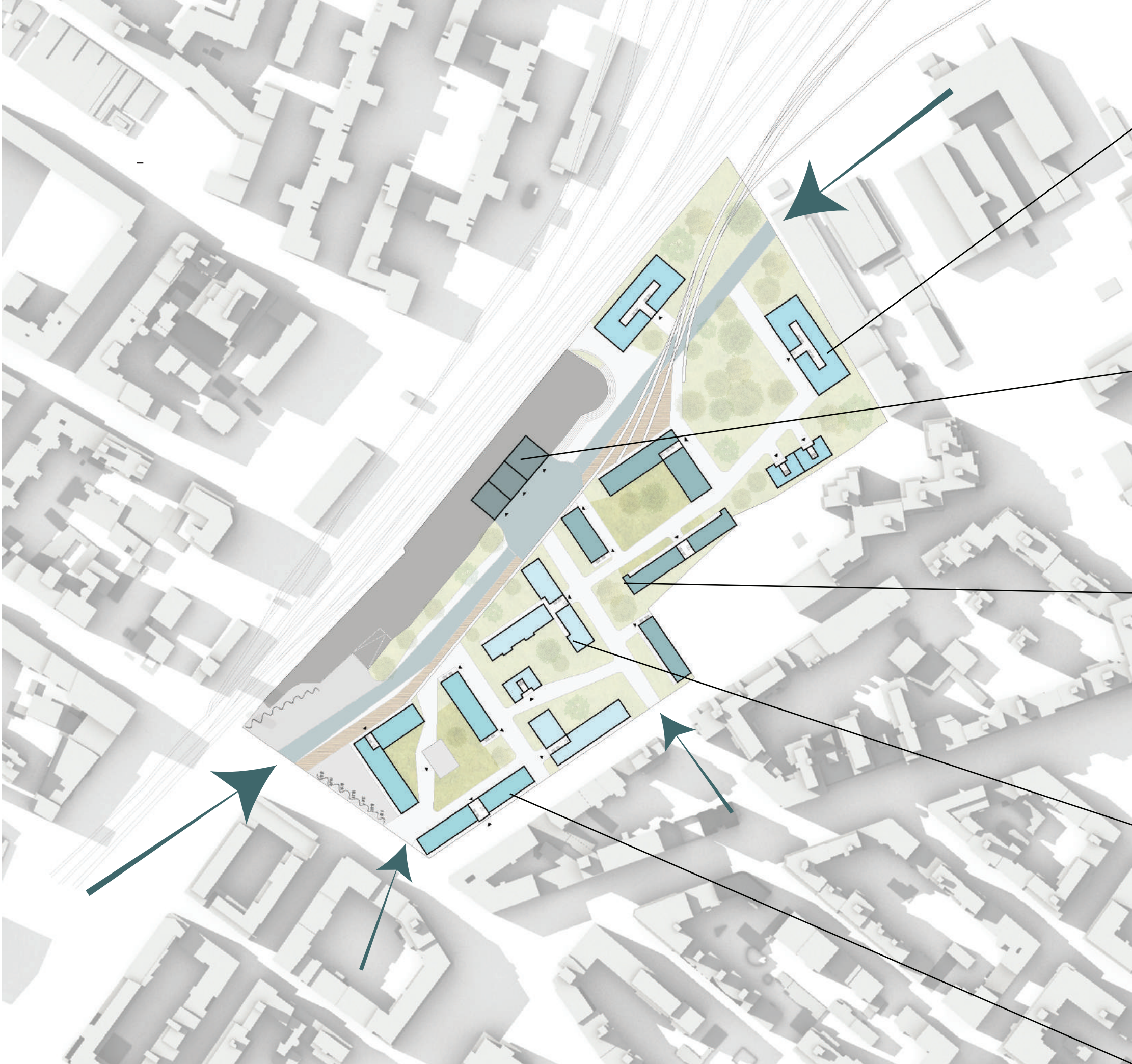
- 4 blocks
- transformation of traditional block structure
- open corner points

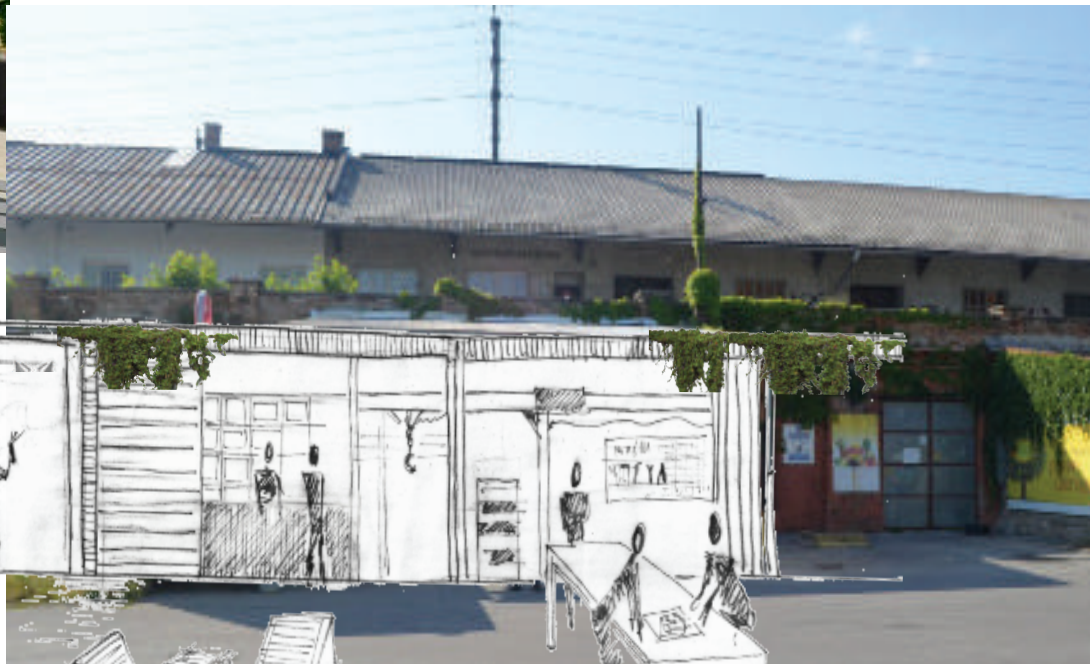


5) FUNCTIONS

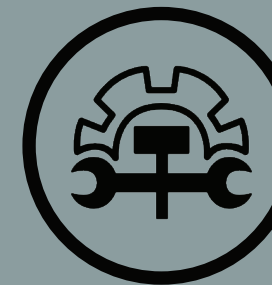
- 4 housing blocks
- 3 main functions in the groundfloor : sport, children, urban gardening







PARK / GREENERY
old park, green space, calm and relaxing area, gardening



WORKSHOP
using the industrial charme of the site to create a temporary, shared workshop space for art and handcrafts on the central point of the path.



URBAN GARDENING
tracks, facades, and mobile pots will be used from the inhabitants to grow their own food and will promote the connection. A green facade will cool down the flats and create a pleasant living environment inside.



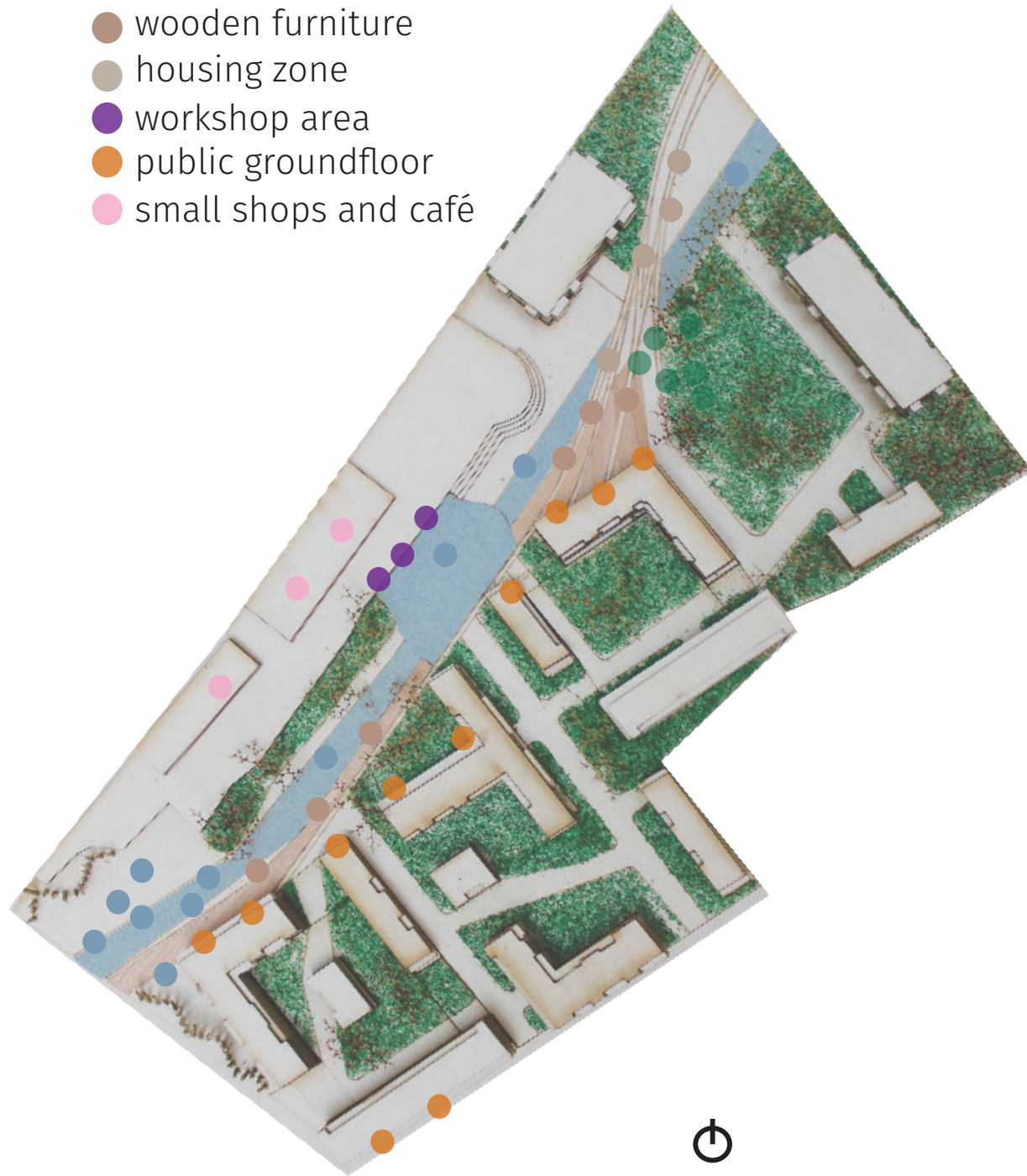
CHILDREN AREA
the inner parts of the complex will be a car-free zone. children can move freely and use public facilities and parks. including a kindergarten and daycare station, as well as a youth.



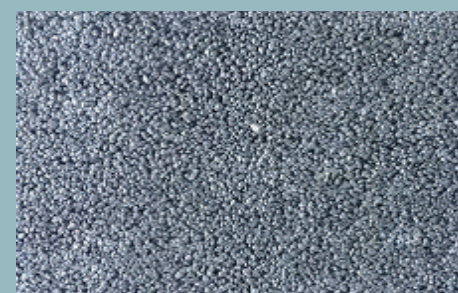
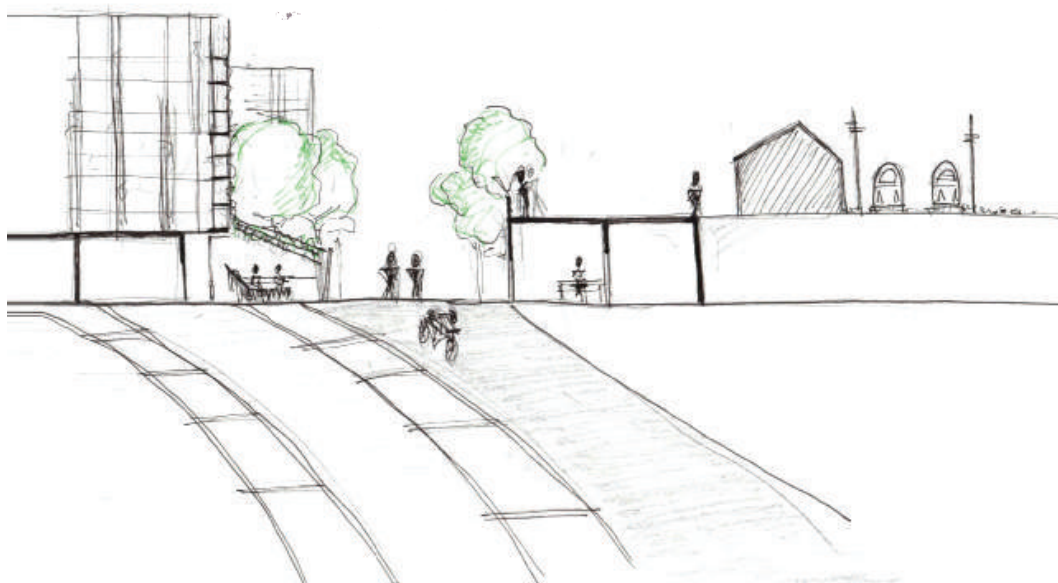
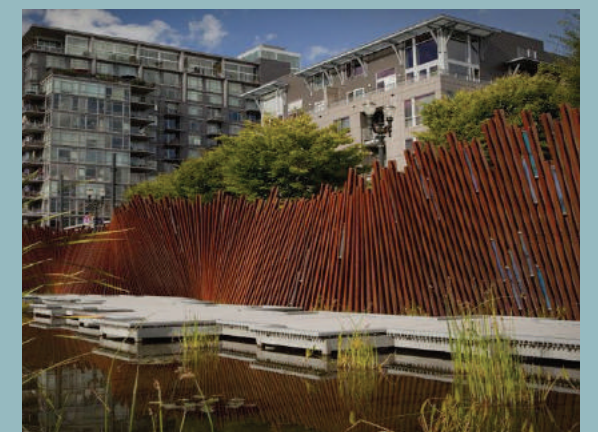
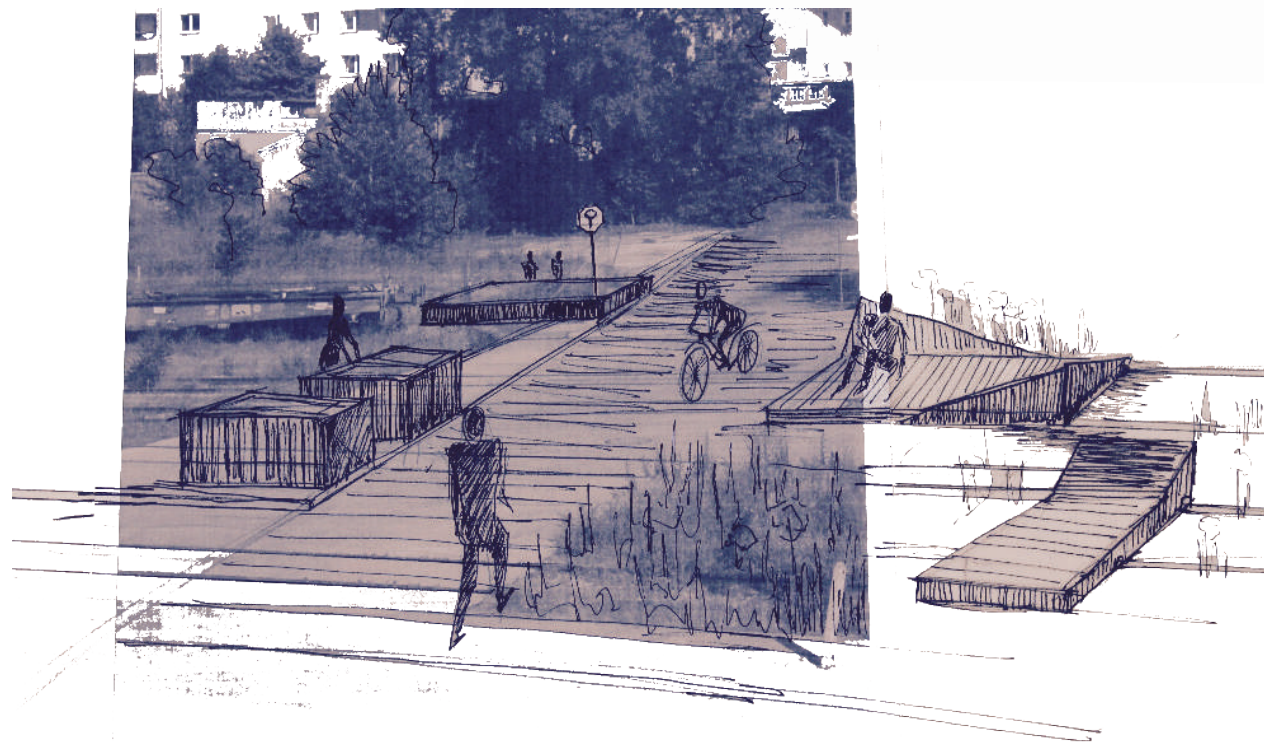
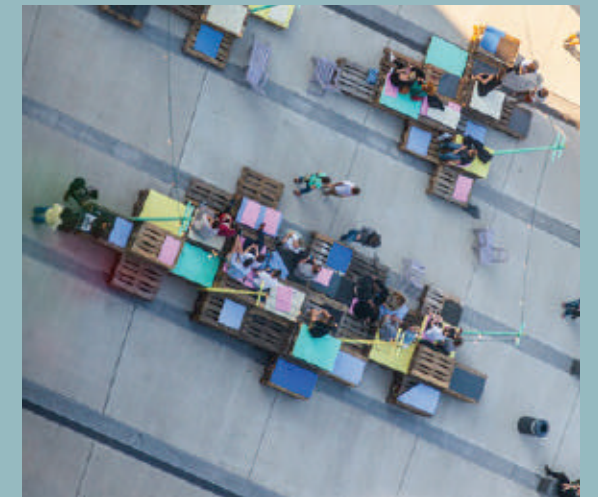
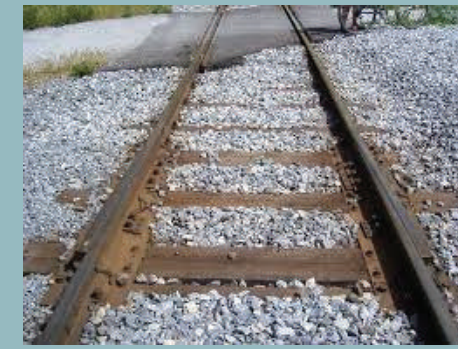
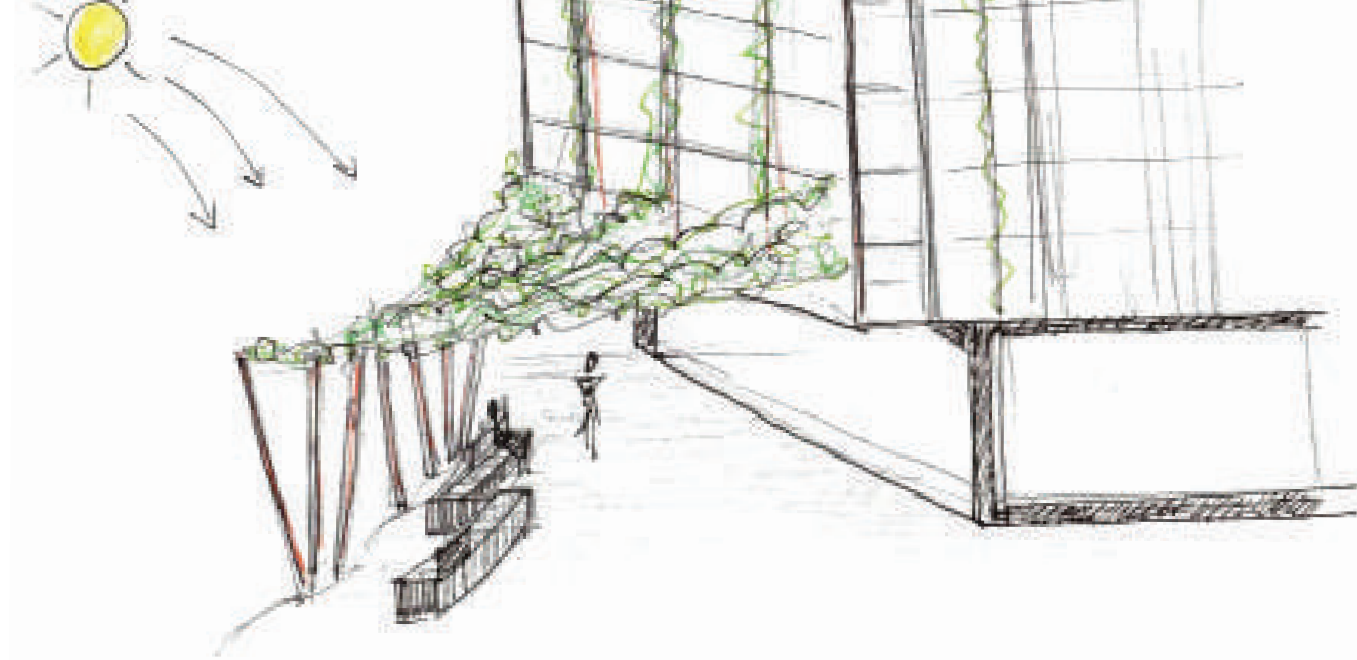
BIKE STATION / SPORTS AREA
with bike workshop, store, café, gym, yogastudio



- public path
- urban gardening
- old railway-tracks
- wooden furniture
- housing zone
- workshop area
- public groundfloor
- small shops and café



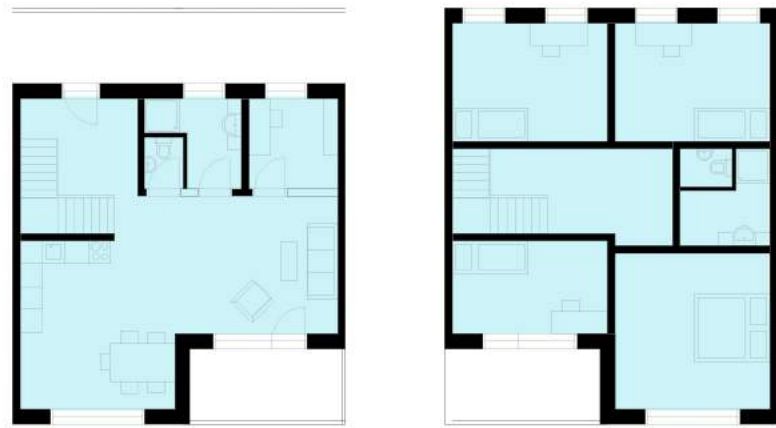
MATERIALS & REFERENCES



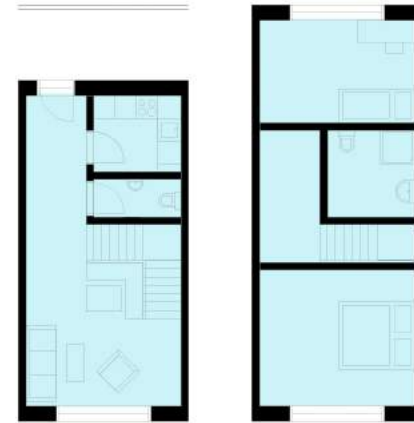




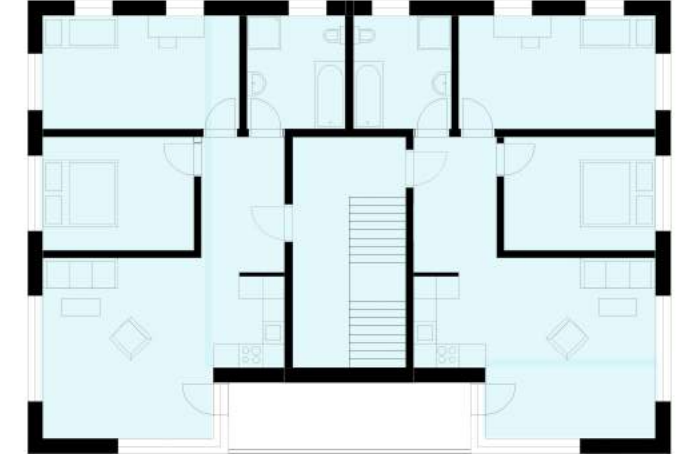
MAISONETTE A 



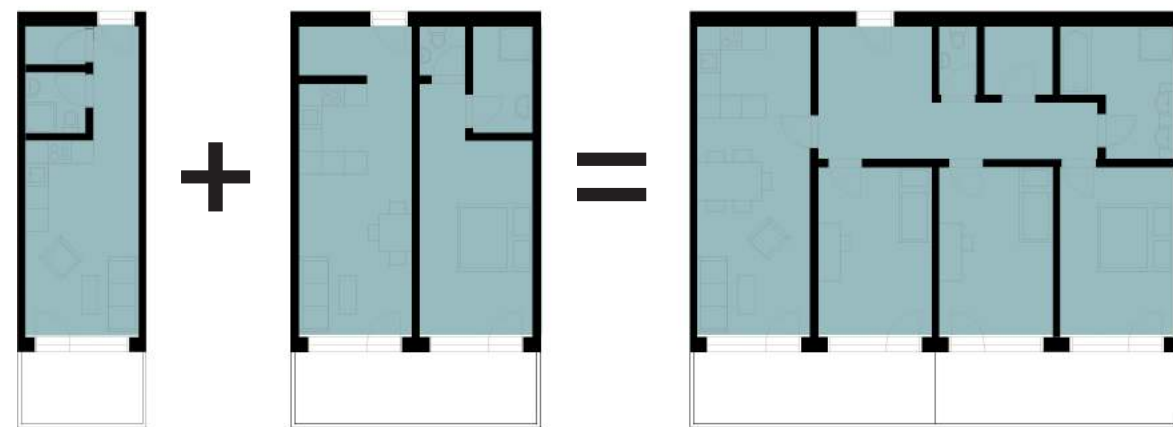
MAISONETTE B 



COURTYARD HOUSE  

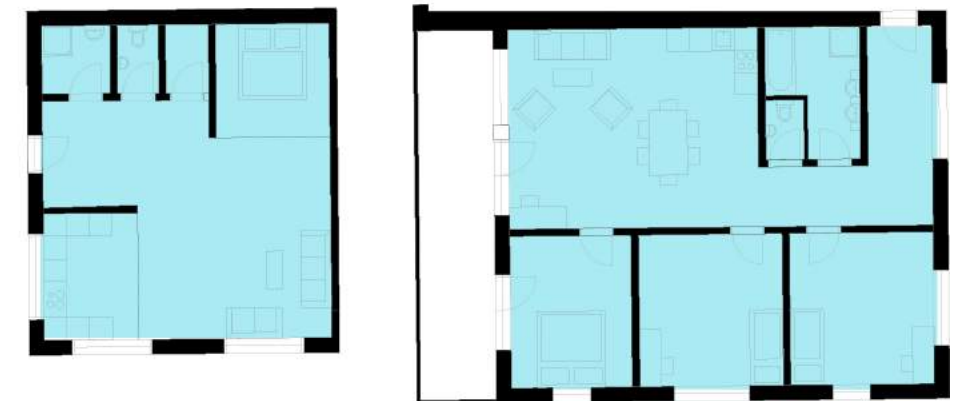


 FLEXIBLE HOUSING 





MIXED USES 





URBAN HOUSING 

