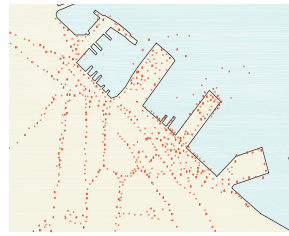


URBAN FURNITURE



FROM NOW ON



starting point



The parks and the streets are important places for community gatherings. But you hardly ever get a seat, and the children have



to play with the sand left near a construction site, as there are only few playgrounds.



reference project



urban furniture Museumsquartier, Vienna by PPAK architects



aims

Urban furniture that is unequivocally recognized will be positioned along several axes leading to the waterfront. This emphasizes the axis and leads the procession to the harbor area.

The urban furniture reacts accordingly to the needs of its user and it facilitates the life on the streets, which is very important in Odessa.

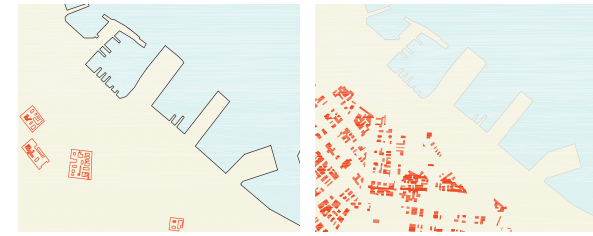


functions

gives people the chance to sit or lie, to play, to sell their nuts on it, to plant a tree in it,



COURTYARDS



FROM NOW ON



starting point



Due to complicated ownership structures the yards are often neglected and only used as parking area. There are no funds to do renovations.



reference project

The community garden movement in New York City was born in the 1970s by residents who were disgruntled by the situation in their neighborhoods and disappointed by the inability of the city to provide green spaces. They started by cleaning up garbage-strewn empty lots and began to build their own small recreation areas. It became apparent that these gardens filled a huge need in the neighborhoods for

community gathering places. In 1978 the city administration, recognizing the value of these gardens, established the GreenThumb program, which leases vacant lots to gardeners for a dollar a year and provides assistance and expertise. As a rule, members pay a small fee for the use of the garden, which entitles them to a key and, with luck, a plot of their own.



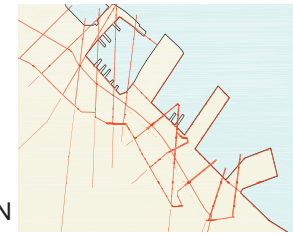
aims

A campaign to improve the old city incorporates the inhabitants into the process of renovation and it sensitizes them for these old structures and the cultural heritage.

Regular readings are held in different yards, inducing the people to clean it up, and to renovate it with financial aid from the alliance organizing these events. The readings help to collect the money for further renovations. Moreover the topic of the events is the city itself, its history and its inhabitants and it is a platform supporting young local artists.



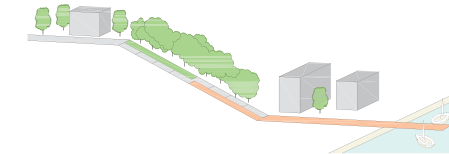
AXIS



FROM NOW ON

starting point

The city does not have any connection with the waterfront, you can hardly ever see the water. And it is very difficult to reach the water.



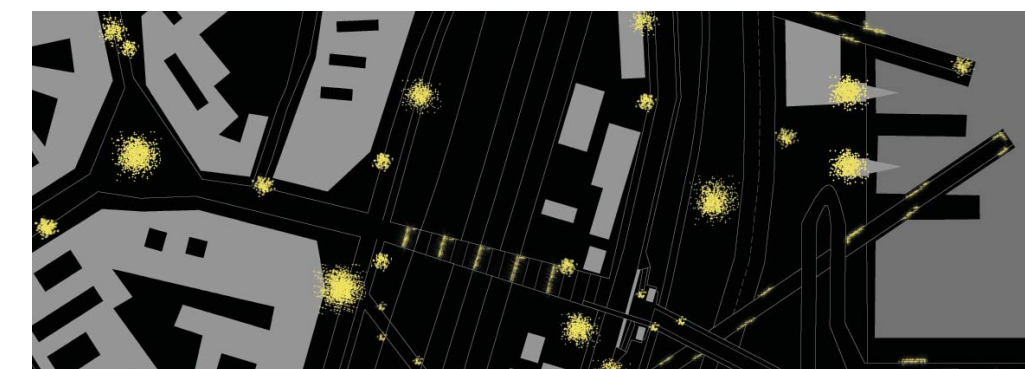
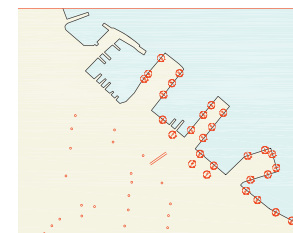
aims

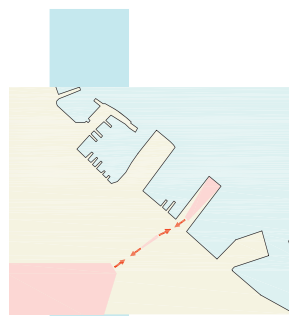
The quality of parks and green spaces is improved by gardening measures. Strongly frequented parks are made even more accessible to a larger group of people. Especially playgrounds and grassfields are built and furniture is provided. Furthermore axes are defined to provide a better view to the harbour and to the Black Sea.

Along these, the trees are thinned out to provide a better view to the harbour and to the Black Sea, paths and small stairs are built to ensure better access, and in the harbor area they are „translated“ into wooden pathways and footbridges forming the path network.



LIGHTENING CONCEPT





FROM NOW ON

starting point

Actually the stairs do not lead anywhere as there is only a street with heavy traffic on one end and a court without much live on the other side.

aims

The connection between the old city and the harbor is improved immediately by two measures: The navigation to the Potemkin Stairs is improved by placated traffic. This helps to provide an easier and more interesting approach to the important tourist site and it strengthens the connection between the stairs and the

pedestrian area thus the city.

The connection between the stairs and the harbor is improved. A big obstacle in this area is the situation at the bottom of the stairs, with the heavy traffic and the missing link to the waterfront. To

amend the current situation, a bridge connecting the stairs and the harbor platform is built, and may be used until a final solution is found. During this time the Bridge and the adjacent harbour platform can also be used as a stage having the audience watch from the stairs, as well as the other way around, with the event

taking place on the stairs and people watching from the platform and the bridge, using either the old town or the new harbour and the Black sea as background.



WATER ACCESS

FROM NOW ON

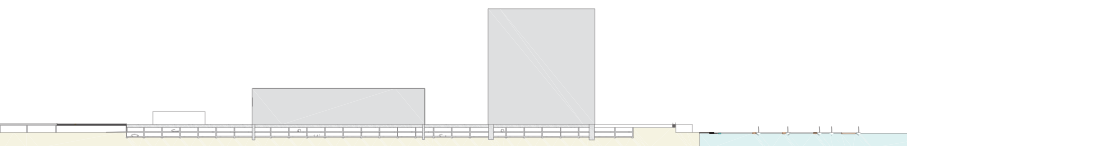
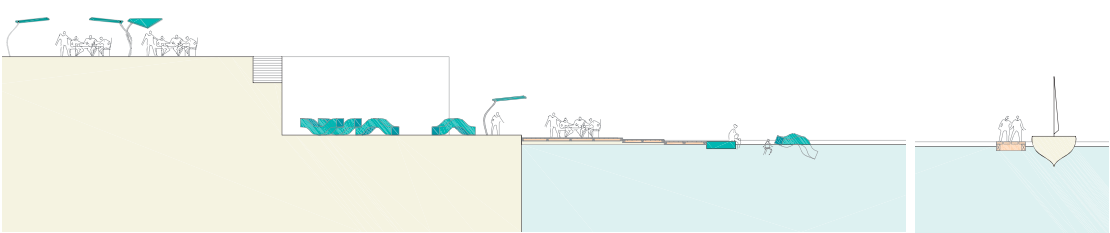
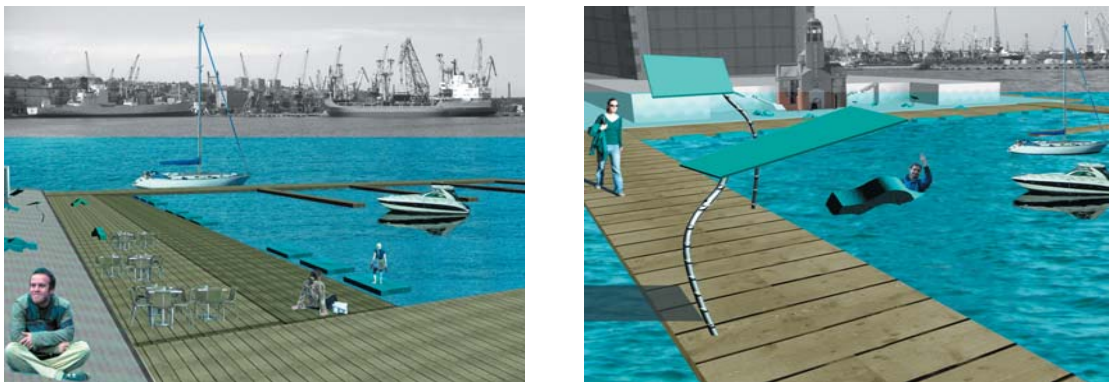


starting point

hardly any relationship with the water, no access and way of using the harbor area.

reference project

Shore Promenade in Malmö by J. A. Andersen, 2001



2005 2010 2015 2020

SHADOW

FROM NOW ON



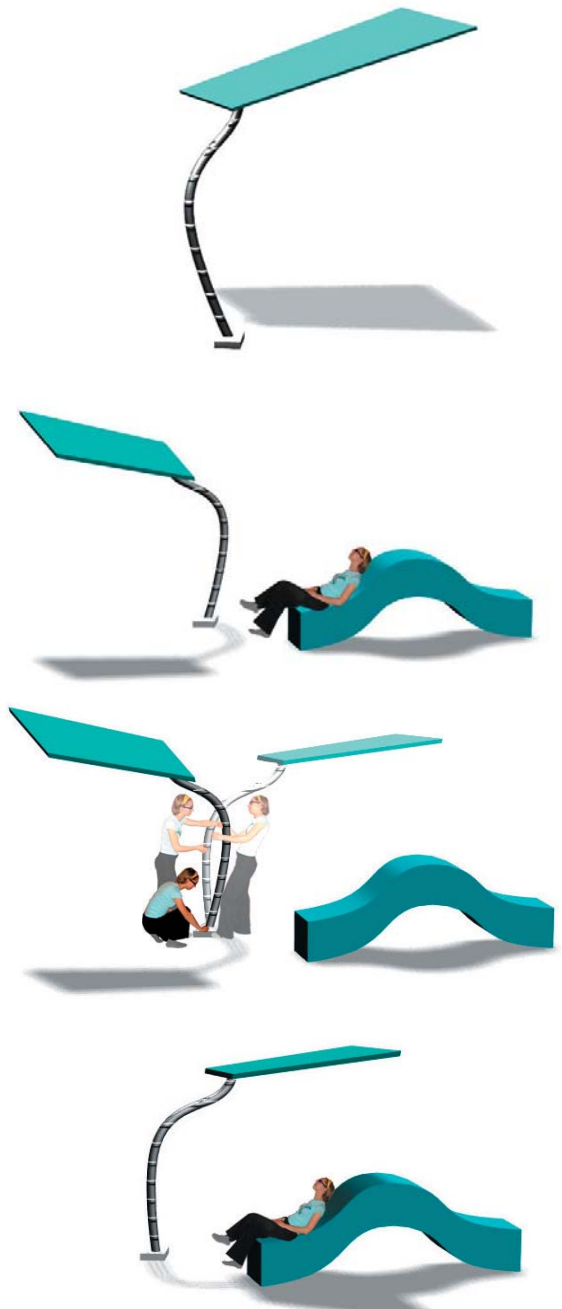
starting point

Shade is a very important topic in the city. Trees frame the streets and provide a green roof above the sidewalks enfolding them with cool air.

Even the houses are kept cool in the summer due to this natural sun shade. The shade in the harbor is provided by shady structures as well as trees.

reference project

Parc Central in Nou Barris, Barcelona, Spain by A. Arriola, C. Fiol, 1998
city square Schouwburgplein, Rotterdam, The Netherlands by West 8, 1997

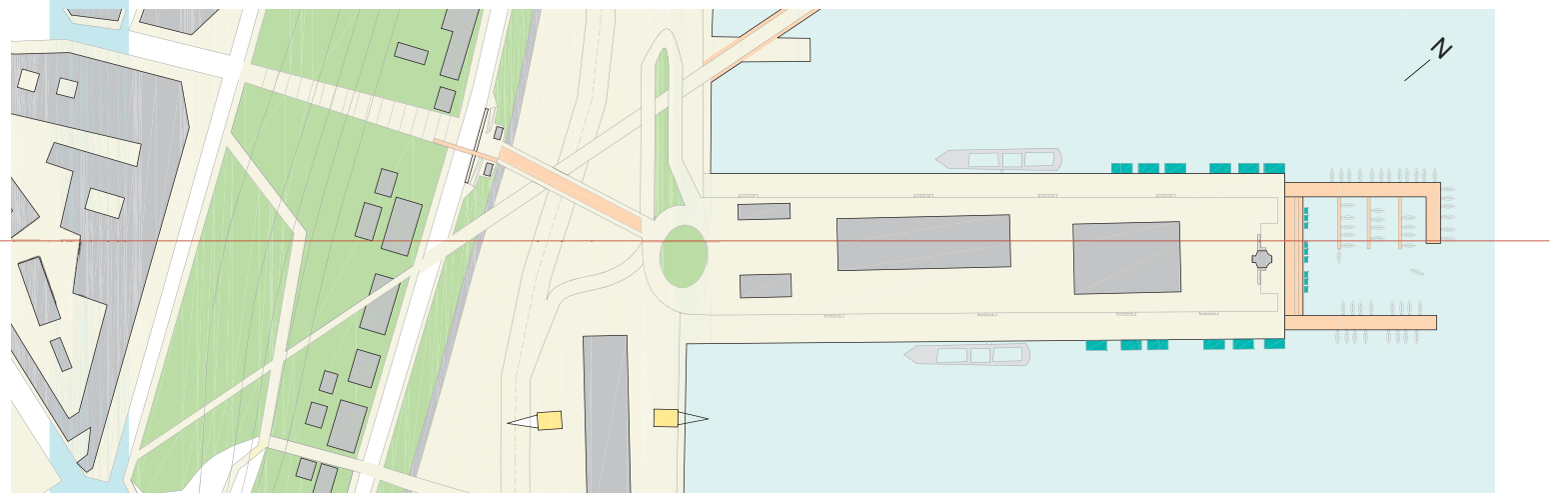


2005 2010 2015 2020

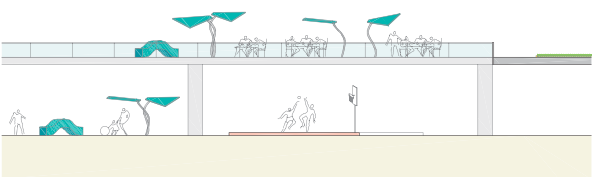
2005 2010 2015 2020



section scale 1:200



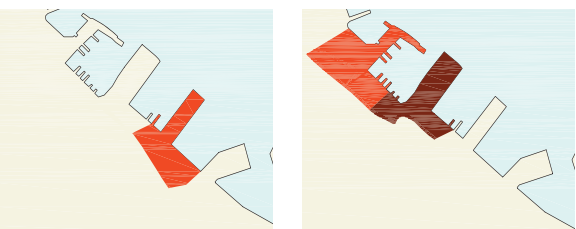
top view scale 1:2000



section scale 1:2000

HOT SPOT 1

FROM NOW ON



HOT SPOT 2+3

starting point



People don't like the harbor. They would tear it down and just built new structures like the hotel Odessa, ignoring the history of this place and the important role the port always played. The port was the reason why the city was built in the first place.



aims

The long-term measures are divided into two phases:

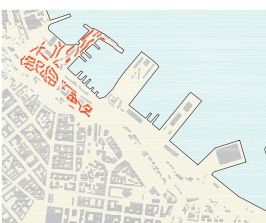
1_ To ensure a slow development towards the waterfront giving the inhabitants the time to „re-identify“ with the port, the area is divided into several zones. Starting with Zone 1 each part is becoming a „hot spot“ for 5 years.

During this time the area is made accessible for the public and is used as a stage for different events. Some of the storage buildings are given a temporary use for cultural, social or recreational purpose.

2_ After 5 years the hot spot moves on to the next zone, and the first area is going to be refurbished with its permanent use: a mixture of residential areas and public space including adapted harbor buildings – as a landmark of the history of the city.

This segmenting is used to ensure a slow growth of the city, give the infrastructure enough time to develop and enable a constant adjustments to the needs of the city and its inhabitants.

FINAL USE

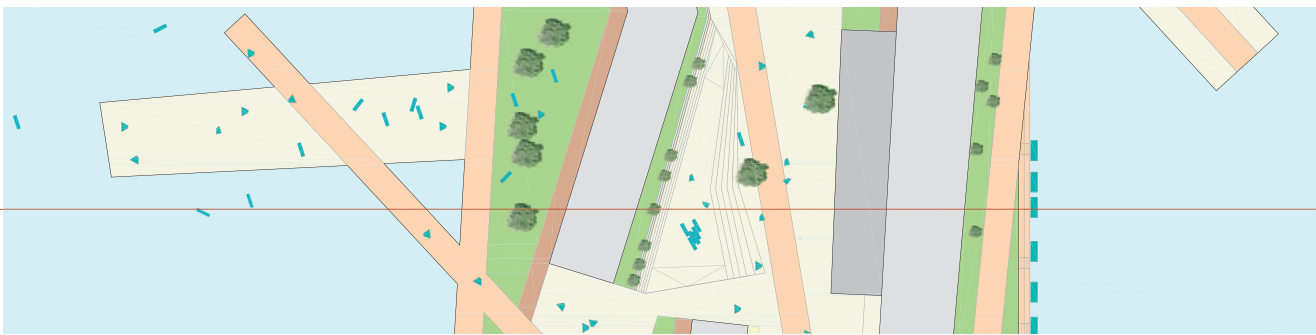


aim

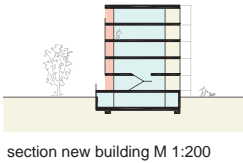
The new development plan consists of „exploded“ traditional structures, enabling the yards to connect with each other thus forming new semi-public spaces, and providing different views in between the areas.



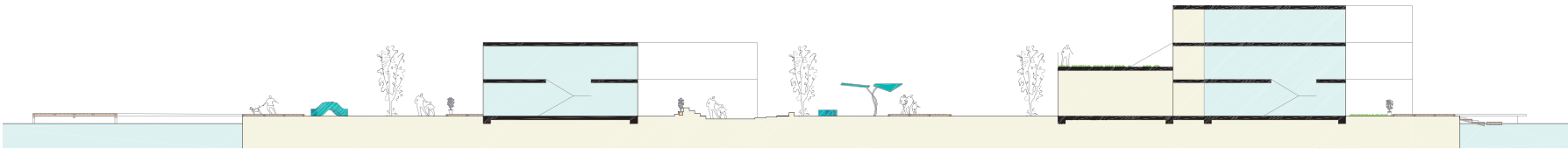
top view scale 1:2000



top view scale 1:500



section new building M 1:200



section new building nearby waterfront scale 1:200

