



MASTERPLAN

0M 200M 500M
100M



SKETCH FOR THE FUNCTION POINT 1

SKETCH FOR THE FUNCTION POINT 2

For developing the three energy lines, we suppose three main traffic roads, which would satisfy the most demand of the traffic of the three direction, in aid of one exclusive road for public transportation in the low level of the up land in south part, and another a system of water bus, which would be another great attraction for tourists.

Along side these energy lines and their traffic support, we started to define the locations, functions and forms of the "FUNCTION POINTS".



Function Point X: ISAAC BABEL ODESSA JEWS MUSEUM

Function: CULTURE FACILITIES

Babel, Isaac Emmanuilovich (Isak emmanuilovich babel) - 1884-1940, Russian writer, b. Odessa.

Odessa was famous for a lot of artists and writers who were born here. Most of these famous people are Jews. By the year of 1937, the Jew occupied the popular of 37%. For remembering the contribution by the Jews to this city, we suppose to build here a Jews museum.



Function Point X: SVIATOSLAV RICHTER CONCERT HALL

Function: CULTURE FACILITIES

Although born in Zhitomir in Ukraine, Richter grew up in Odessa. Unusually, Richter was largely self-taught. Richter was treated as one of the greatest Russian pianists, he was famous for his direct passionate, tremendous power and clear understanding of the music.

We suppose to set up a Richter concert hall in the most distinguish place of the harbour.



Function Point 1: DAVID OISTRAKH PERFORMANCE CENTER

Function: CULTURE FACILITIES

Oistrakh, David Fiodorovich (david) - 1908-74, Ukrainian violinist, b. Odessa. Encouraged by his father, an amateur violinist, he began to study his instrument at the age of five. He graduated from the Odessa Conservatory in 1926 and launched a brilliant concert career. Oistrakh was internationally esteemed as one of the towering virtuosos of the day.

A brand new, modern and big performance center including theater, music hall, lecture hall is now very necessary to the culture life of odessa.

Based on the original park and stadium, adding new sport facilities, to develop this area into a sport themes park.

Function Point X: ODESSA SPORT PARK

Function: SPORT FACILITIES

Function: MIXTURE

A mixture of residential buildings and public facilities. The mixture of function is a result of the standing place, which located in the turning point of the two energy lines: a "public" one and a "private" one.

Function Point 2: LIVING PARK

Function: MIXTURE

A mixture of residential buildings and public facilities. The mixture of function is a result of the standing place, which located in the turning point of the two energy lines: a "public" one and a "private" one.

Function Point X: ODESSA SANATORIUM CENTER

Function: PUBLIC FACILITY

Odessa was famous for its sanatoriums. We suppose to build here a huge sanatorium center.



Function Point X: NATHAN MILSTEIN CONSERVATORIUM

Function: EDUCATION

1904-82, Russian violinist, b. Odessa. Milstein attended the music school in Odessa before entering the St. Petersburg conservatory, where he studied under Leopold Auer. He made numerous world tours and was known for the precision of his technique and the discriminating taste of his interpretation. We suppose to set up a conservatorium after his name.

Function Point X: Emil Gilels University

Function: EDUCATION

Emil Gilels (October 19, 1916 - October 14, 1985) was a Ukrainian classical pianist of the Soviet era, one of the greatest pianists in 20. century.

Gilels was born in Odessa in 1916 to a musical family; both his parents were musicians. He began studying the piano at 6, making his first public debut at the age of 13 in 1929. In 1930 Gilels entered the Odessa Conservatory.

Emil Gilels is the first soviet pianist to play in the west and famous for his technique control and barish tone.

GREEN BELT
PUBLIC / CULTURE FACILITIES
60% PUBLIC SERVICE / 40% RESIDENCE
20% PUBLIC SERVICE / 80% RESIDENCE
NORMAL URBAN RESIDENCE

THE TRANSITION OF FUNCTION

VERY BIG

BIG

VERY BIG

MIDDLE

SMALL

THE TRANSITION OF SCALE

POTENTIAL

What is the advantage of Odessa?

1. A long bank of more than 20 kilometers with beautiful landscapes, harbours, beaches and forests, this is the most important nature advantage of the city.

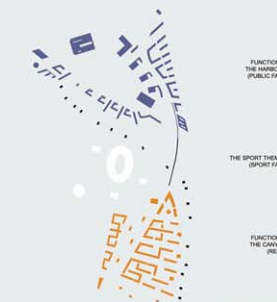
2. Odessa was famous for its culture and education. Don't forget that many world famous artists and musicians like Gilels, Richter, Moisewitsch, Oistrakh, Milstein were born here or educated here. Their names made odessa also world famous.

According to these reasons, we suppose to build a lot of culture facilities along side the bank especially in the harbour area. In addition to that, there will be also a conservatorium and university.

THERAPY

STEP 2: to determine the

THE FUNCTION POINT



FUNCTION POINT 1
THE HARBOR PARK
(PUBLIC FACILITIES)

THE SPORT THEMES PARK
(SPORT FACILITIES)

FUNCTION POINT 2
THE CANYON PARK
(RESIDENCE)

THE HARBOR

THE BRIDGE

THE GREEN BELT

THE HARBOR

THE BRIDGE

THE GREEN BELT

THE HARBOR

THE BRIDGE

THE GREEN BELT

THE HARBOR

THE BRIDGE

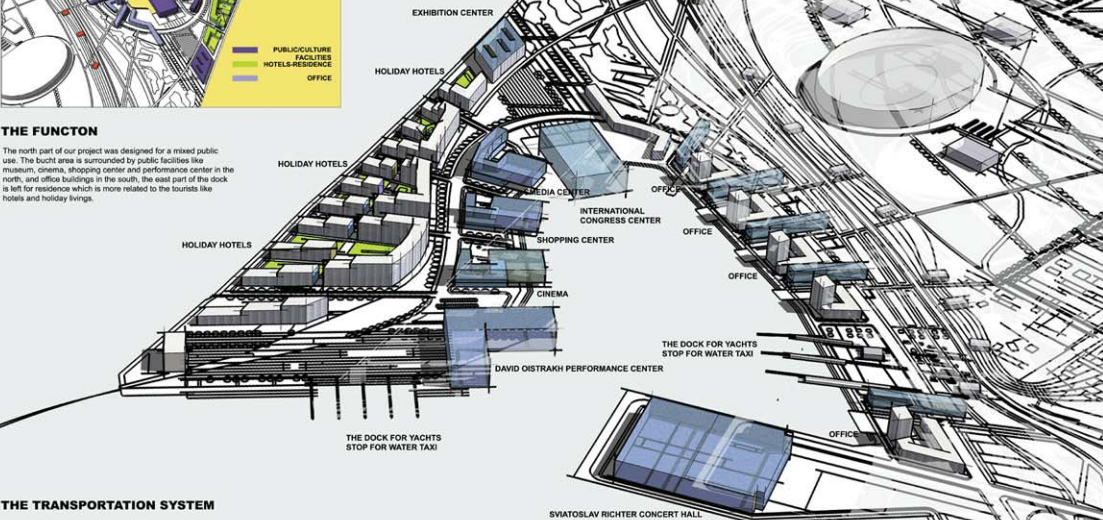
THE GREEN BELT

THE HARBOR



THE FUNCTON

The north part of our project was designed for a mixed public use. The bucht area is surrounded by public facilities like museum, cinema, shopping center and performance center in the north, and office buildings in the south, the east part of the dock is left for residence which is more related to the tourists like hotels and holiday livings.



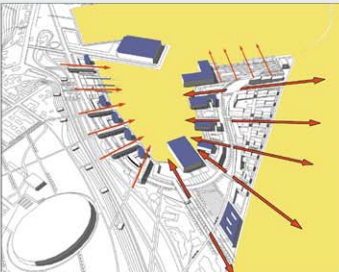
THE TRANSPORTATION SYSTEM

The traffic system is based on the main traffic road which goes alongside the coast. The development of the whole coast area will be all supported by it. The other traffic road goes alongside the green area in the south, this road would be only for public transportation like bus or tram way.



THE VIEW CHANNEL AND SYMBOLS

We manage to provide a open view to the open spaces and landscapes, especially to the bucht and to the sea in all of our resting structure. Alongside the bay, the big public facilities will be the symbols.



FUNCTION POINT 1:
THE HARBOUR PARK

For the north part of our designing area, which is located on a harbour and defines a bucht, we suppose it to be a "harbour park", which would have a function of a mixture of culture facilities, entertainment facilities, tourist facilities (the hotels and holiday livings) and offices. This area will be turned into a very public and active place, with great view into the sea, with modern buildings, with spaces, activities facilities and a lot of parks facing the sea. The forming of the "harbour park" would follow two logics, the first is the bank line surrounding the bucht, alongside it would be a series of big modern architecture, they are public facilities and offices for the modern society like the people in Odessa and in the same time they are new architecture symbols of the city; the other logic is along the bank line on the east, here we suppose to build more private buildings as for homes and residences. They form a lot of units which are more closed to the west and open to the east, in this way they would have the advantage of looking into the sea and by the same time keep their own private character.



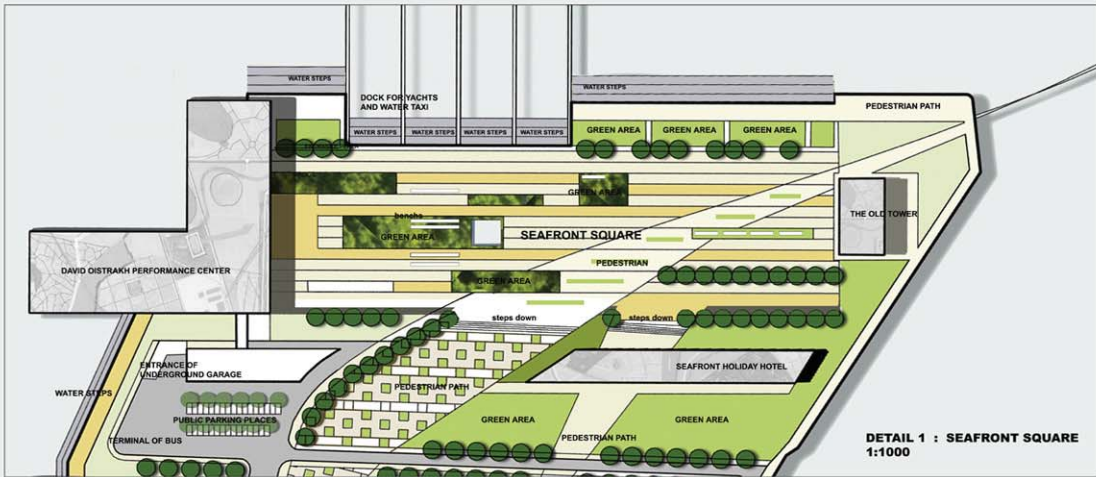
THE PEDESTRIAN PATHS SYSTEM

We elaborate on the pedestrian paths system mainly in two areas:
1. The pedestrian path alongside the sea, it creates a series of waterfront spaces with different size of squares.
2. The pedestrian way in the green forest at the back. Alongside it are also a lot of small open spaces scattered in the forest.



THE GREEN SYSTEM

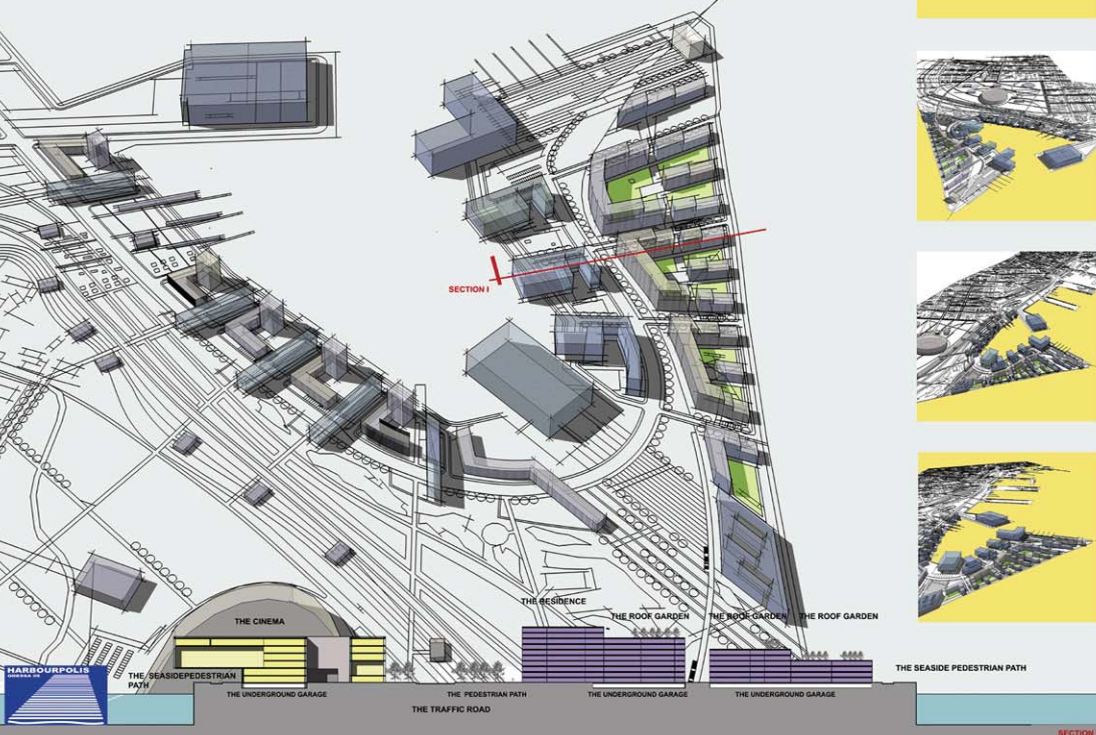
The 200M wide green belt separates the new district from the old city to create an ecological buffer zone, with a lot of open places scattered in it. Alongside the bay, there are public green areas, defined by the public facilities and offices. There are three main nodes in it. In another side of the bay are the green areas which mainly serve the hotels and residences.



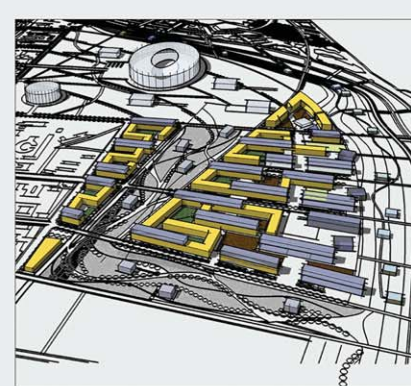
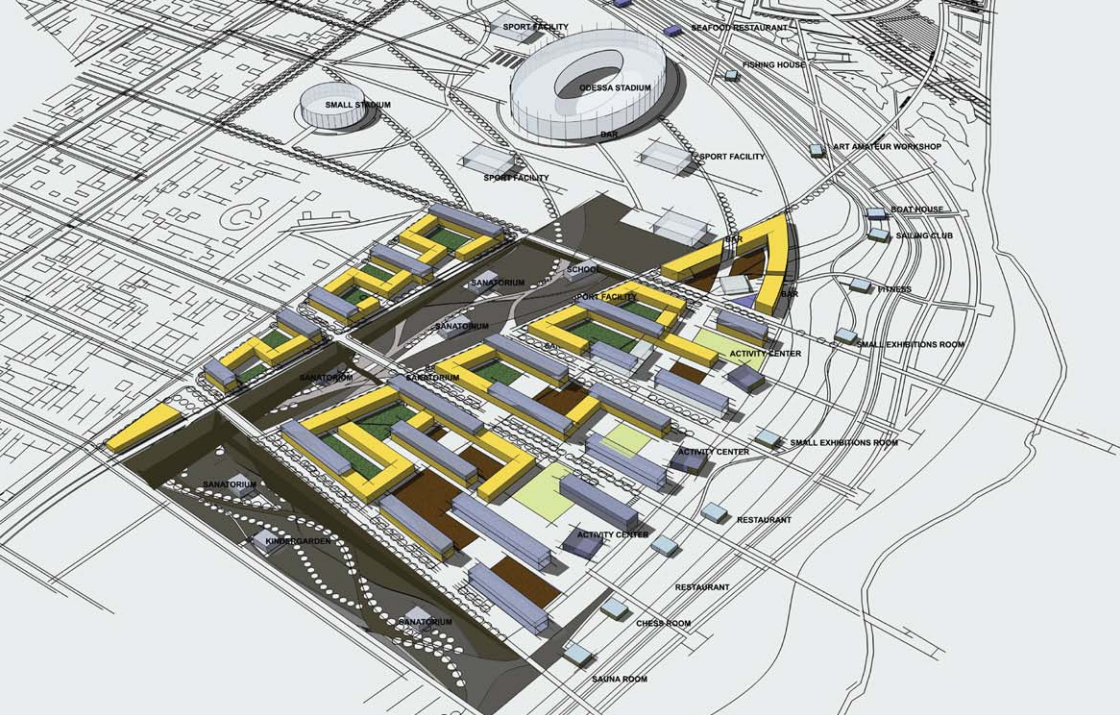
DETAIL 1 : SEAFRONT SQUARE
1:1000



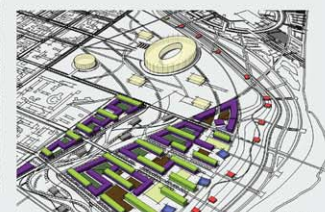
DETAIL 2 : ENTRANCE SQUARE
1:1500



ODESSA'S ACUPUNCTURE



SECTION 14



THE FUNCTION

The mixed function of public service and private living are realized in a vertical design. Moreover, there are small public facilities and community centers on the hillside in the east and sanatoriums and schools in the canyon in the south and west.



THE TRAFFIC

Three traffic roads link the site with the old city, each has its terminal on the edge of the hillside, where open parking spaces and entrances for underground garages are set.



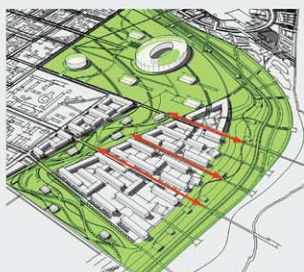
THE PEDESTRIAN PATHS SYSTEM

The small pedestrian paths are set on the hillside and by the coast. The canyon is a main pedestrian area in this site.



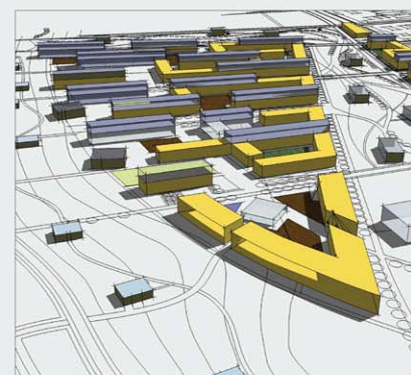
THE VIEW CHANNEL

The form of the buildings ensures the best views to the coast and the sea. In addition, the canyon offers another big view channel.



THE GREEN

The whole living area would be surrounded by green zones. In addition, a lot of green connection would go through the site.



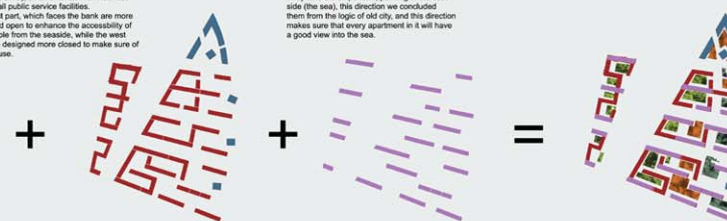
THE FORMING LOGIC

LAYER 1: The Green areas between the buildings are divided into several kinds, they ensure the diversity of the landscape and the activities which would take part in it.



LAYER 2: The storey 1-3 are more for public usage, they are small offices or home offices (SOHO), small entertainment facilities and small public service facilities. The east part, which faces the bank are more public ad open to enhance the accessibility of the people from the seaside, while the west side are designed more closed to make sure of private use.

LAYER 3: The storey 4-5 are designed in another logic. They are more for private living. They take the stripe form, pointing in the east side (the sea), this direction we concluded them from the logic of old city, and this direction makes sure that every apartment in it will have a good view into the sea.



DETAIL 3 : THE CANYON

1:1500



SECTION 14

