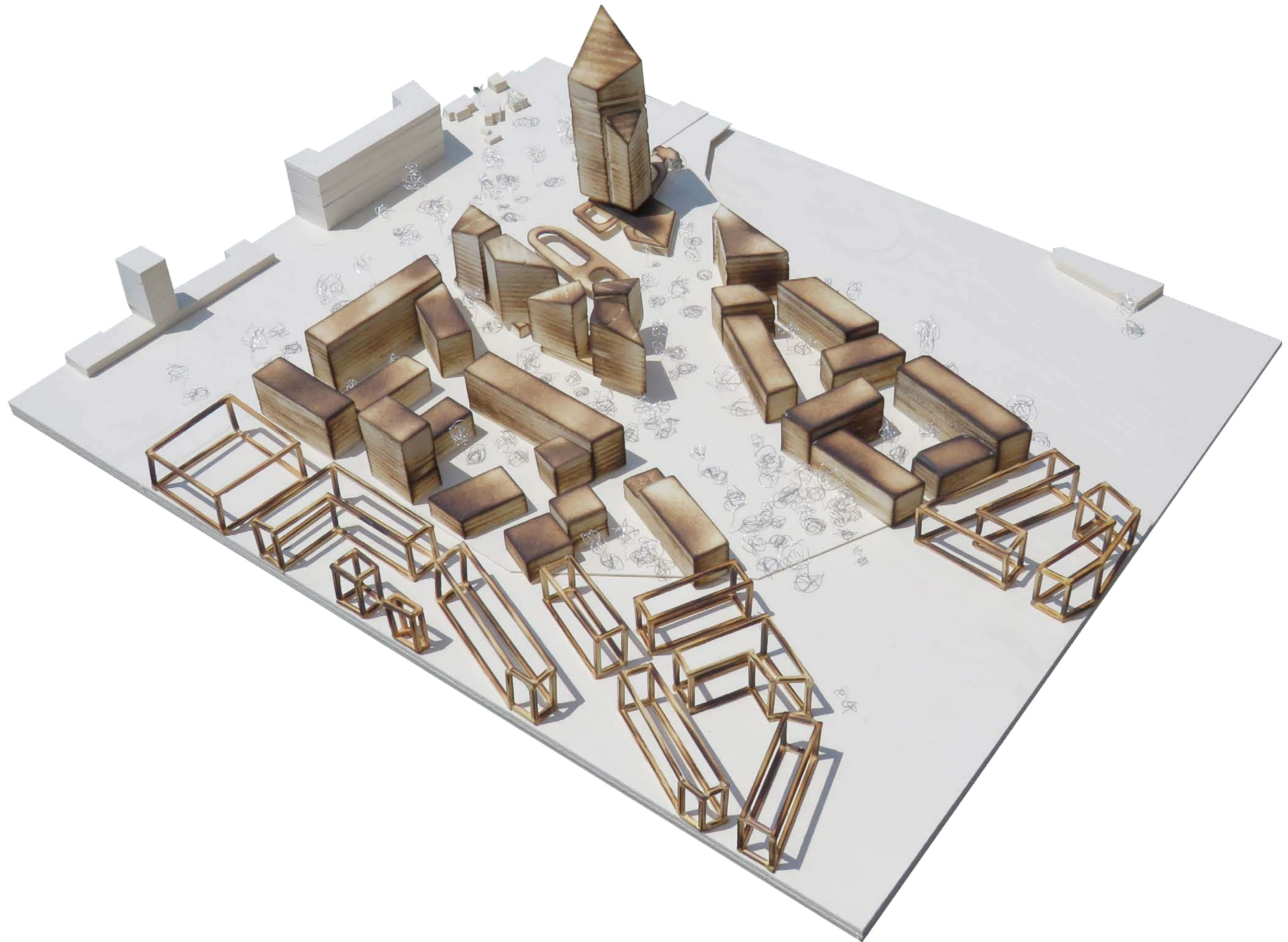
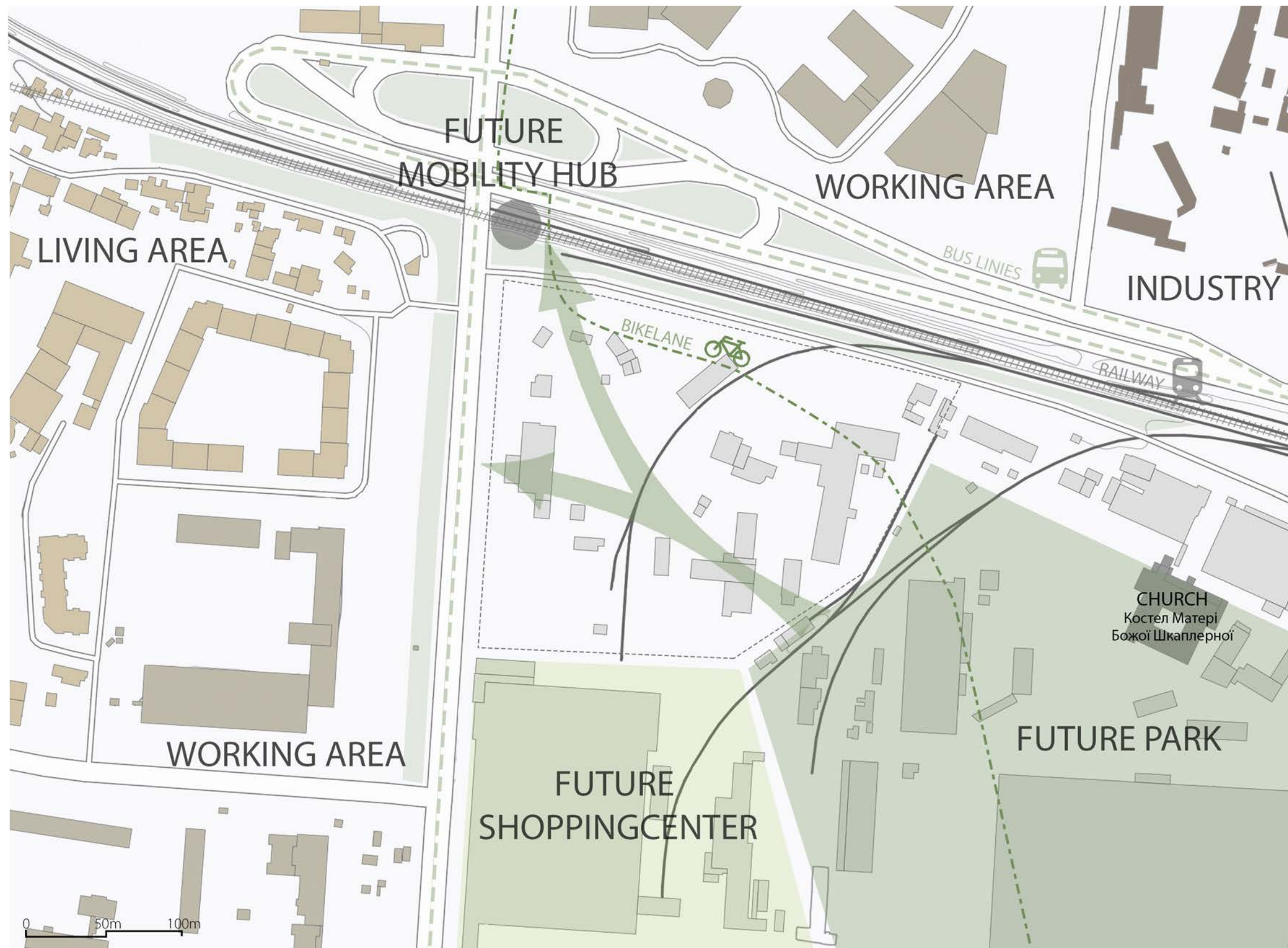




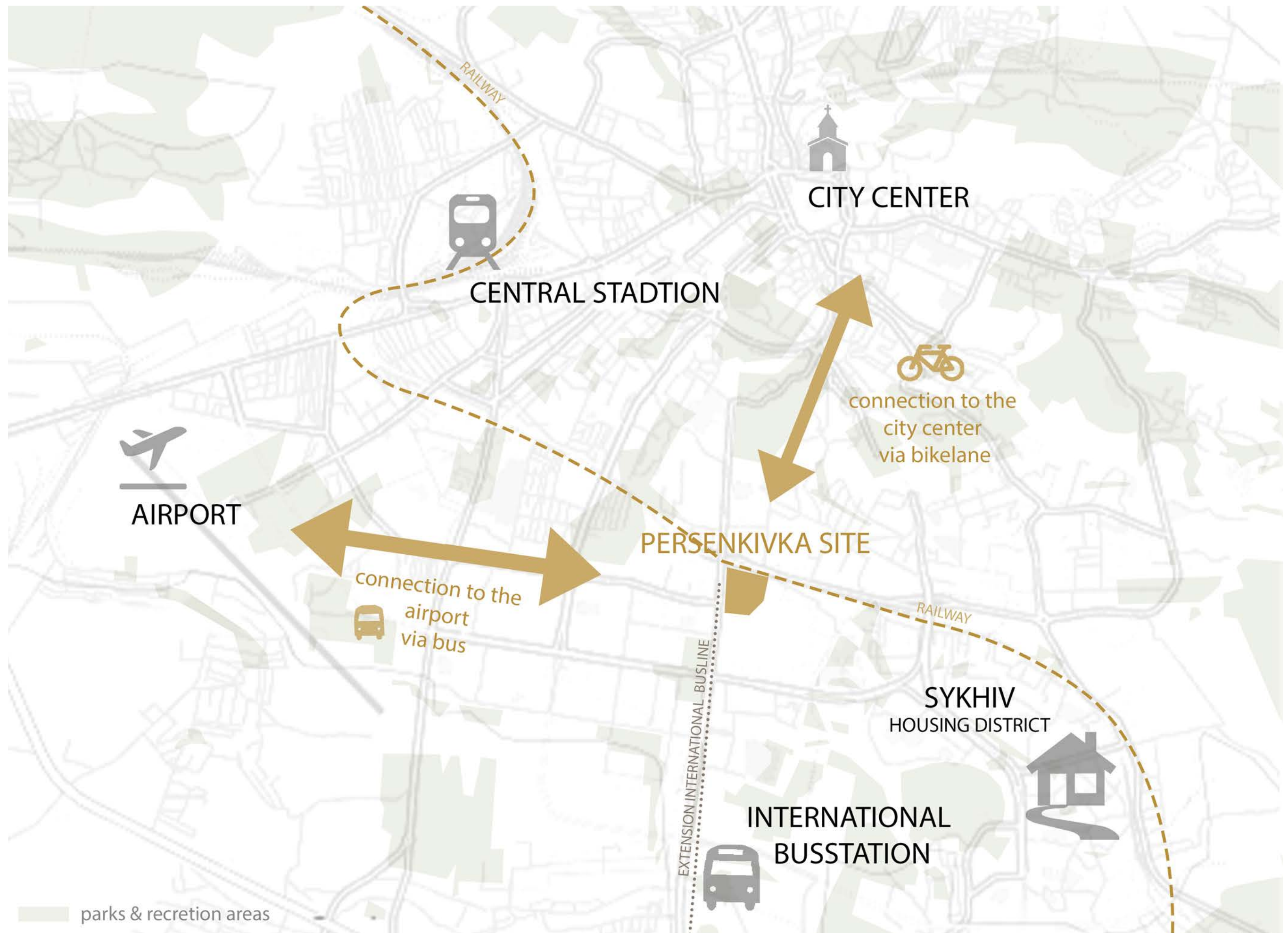
Christoph Köhler 1634826
 Julia Strasser 11701827
 Christina Toniolli 11779627



ANALYSIS OF THE NEAR SURROUNDINGS



ANALYSIS OF THE BIGGER SURROUNDINGS



dynamic

/dʌɪˈnæmɪk/

adjective

(of a process or system) characterized by constant change, activity or progress
„a dynamic economy“

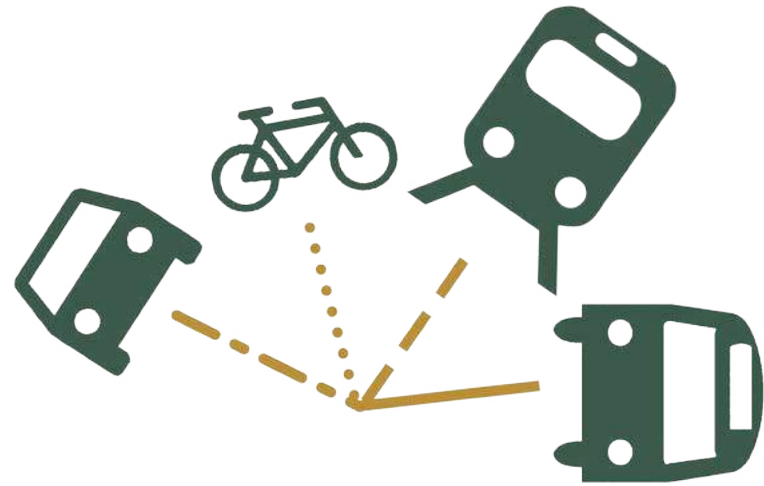
hub

/hʌb/

noun

the effective centre of an activity, region, or network.
„the city has always been the financial hub of the country“

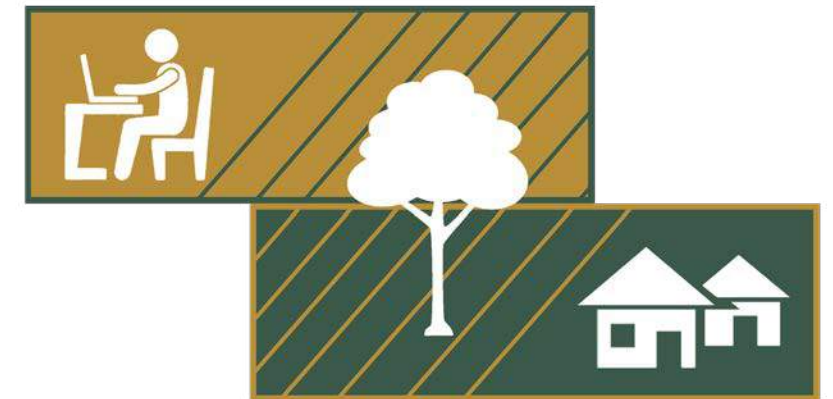
We want to creating a *concentric point for any kind of transportation*, while the area becomes a meeting point with great value and a key aspect of the cities public region. Occupying an important position in the city and handling a large amount of traffic, it provides also a great variety of *functions like commuting, resting, living and working in one zone*. It's a future based site, putting every effort in providing a region, who can produces their own energy and food to ensure a healthy lifestyle for everybody living or crossing this site. "Dynamic hub" forms a vision, where Ukraine's transportation system will be connecting everybody to a new district, which presents a balanced area between working, living and producing.



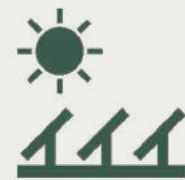
MOBILITY HUB



GREEN CONNECTION



COMBINE FUNCTIONS



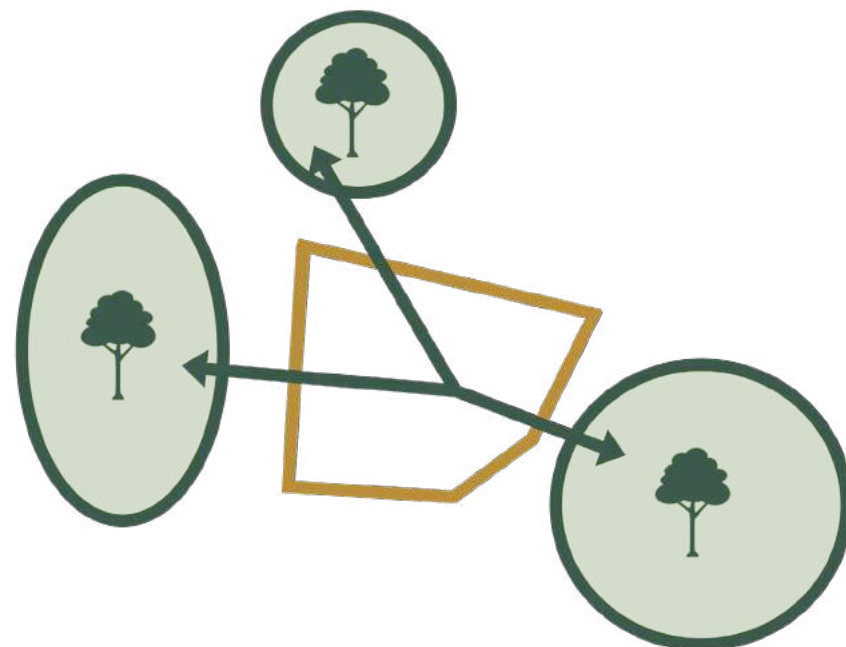
PRODUCTIVE



CONCEPTUAL GRAPHIC



POSITIONING MOBILITY HUB



GREEN CONNECTION



POSITIONING FUNCTIONS



CONCEPTUAL GRAFIC



GREEN INNOVATIONS

GREEN HOUSE:

AREA: ~770m²
 CROP/a: 38,5 t TOMATOS or
 15,4 t CARROTS or
 6,0 t SWEET PEPPER

RAISED BEDS:

AREA: ~660m²
 1,1m² PER APARTMENT
 FOR INDIVIDUAL USE

SOLAR PANELS:

AREA: ~10.900m²
 OUTPUT: ~1.300 - 2.000 mWh
 ENOUGH ELECTRICITY FOR ALL
 APARTMENTS

GREEN FASSADES:

TO COOL THE SURROUNDING IN
 SUMMER AND FOR FOODPRODUC-
 TION

EXISTING TREES:

PROVIDING MOST OF THE EXISTING
 TREES



FUNCTIONS & FACTS

living

apartments
hotel

working

offices
local production
workshop area

activities

sports & fitness
urban gardening
playground area

public space

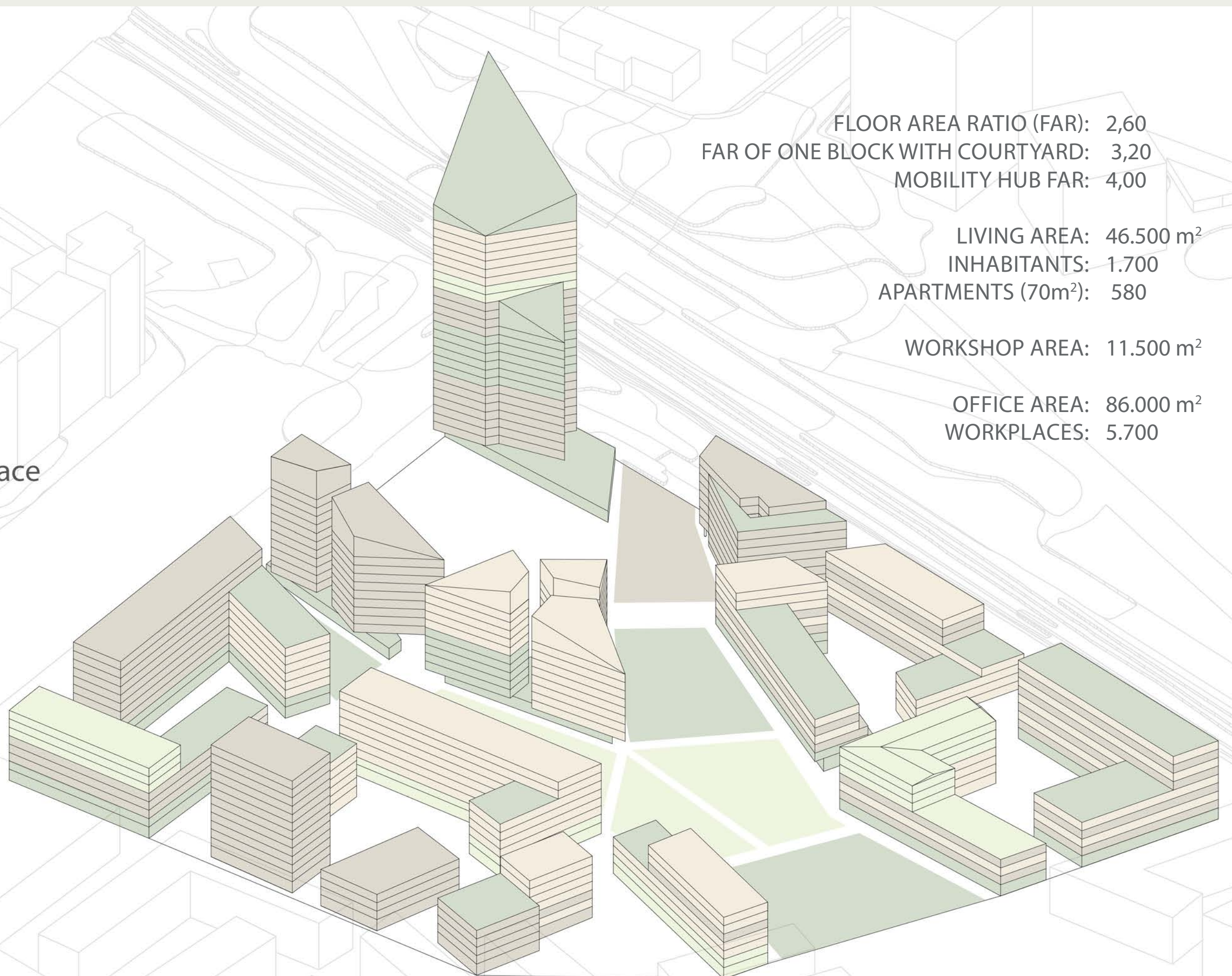
recreation area
event space
rooftop terrace
observation deck
restaurant
café
shopping mall

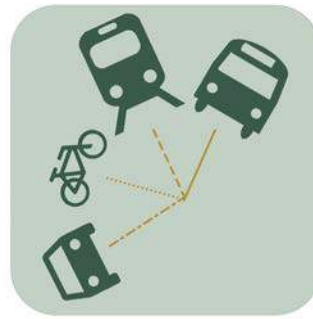
FLOOR AREA RATIO (FAR): 2,60
FAR OF ONE BLOCK WITH COURTYARD: 3,20
MOBILITY HUB FAR: 4,00

LIVING AREA: 46.500 m²
INHABITANTS: 1.700
APARTMENTS (70m²): 580

WORKSHOP AREA: 11.500 m²

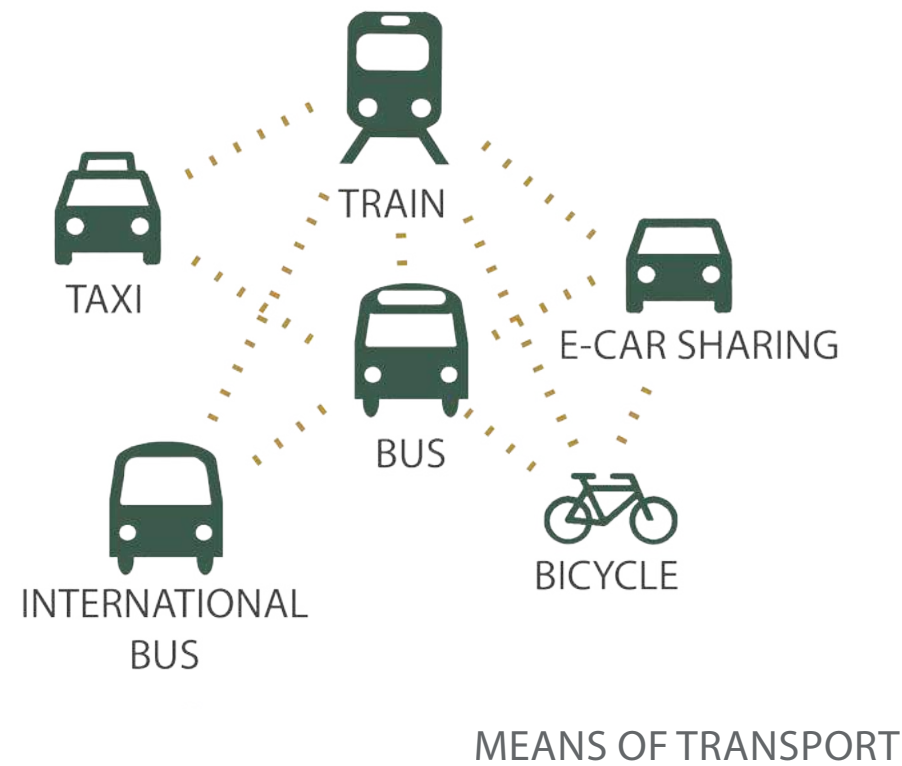
OFFICE AREA: 86.000 m²
WORKPLACES: 5.700



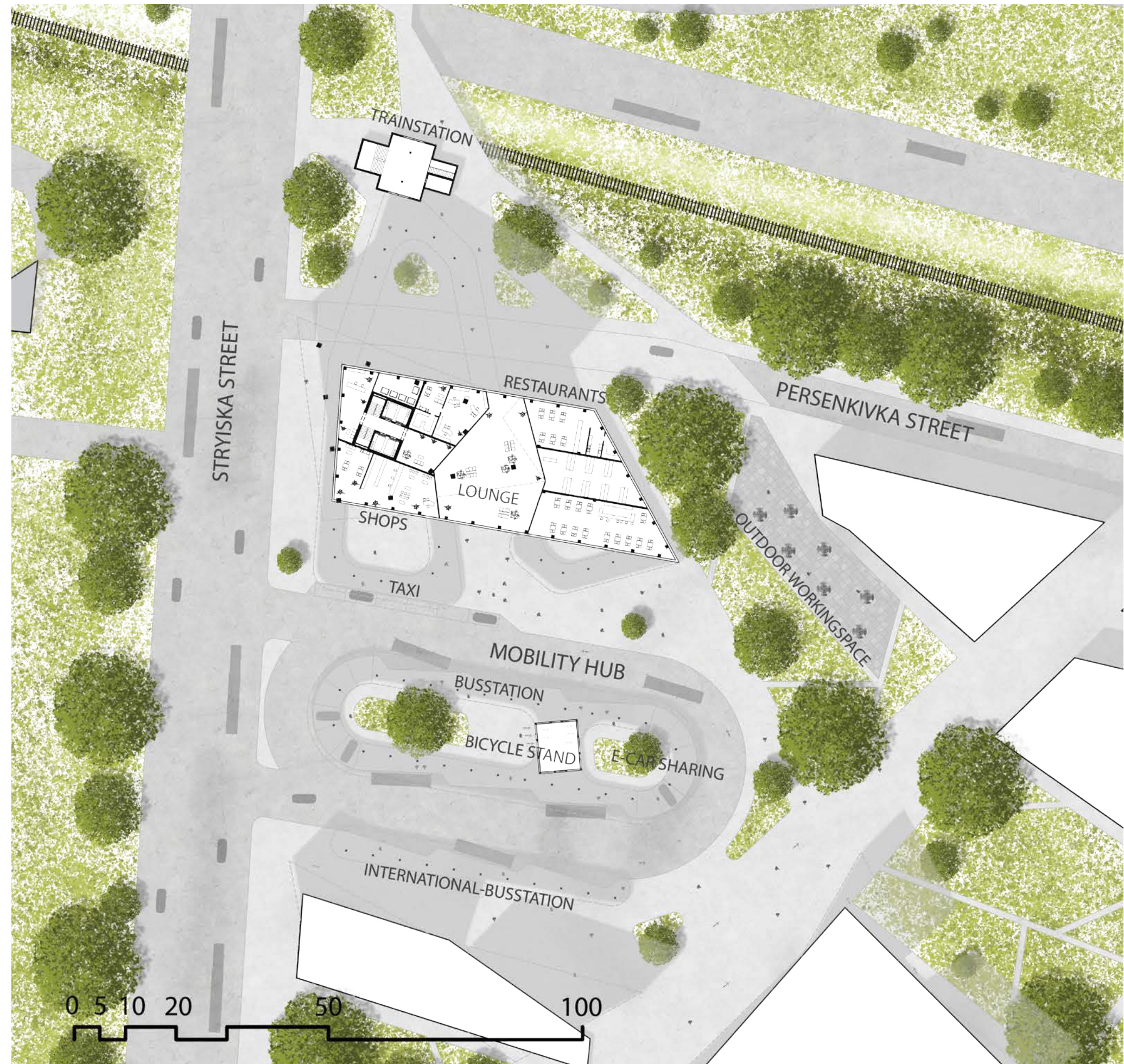


MOBILITY HUB APP

Green Mobility - we connect
car sharing / car pooling / Public Transport



CONCEPTUAL GRAFIC



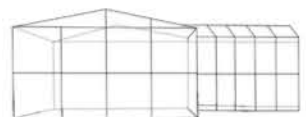
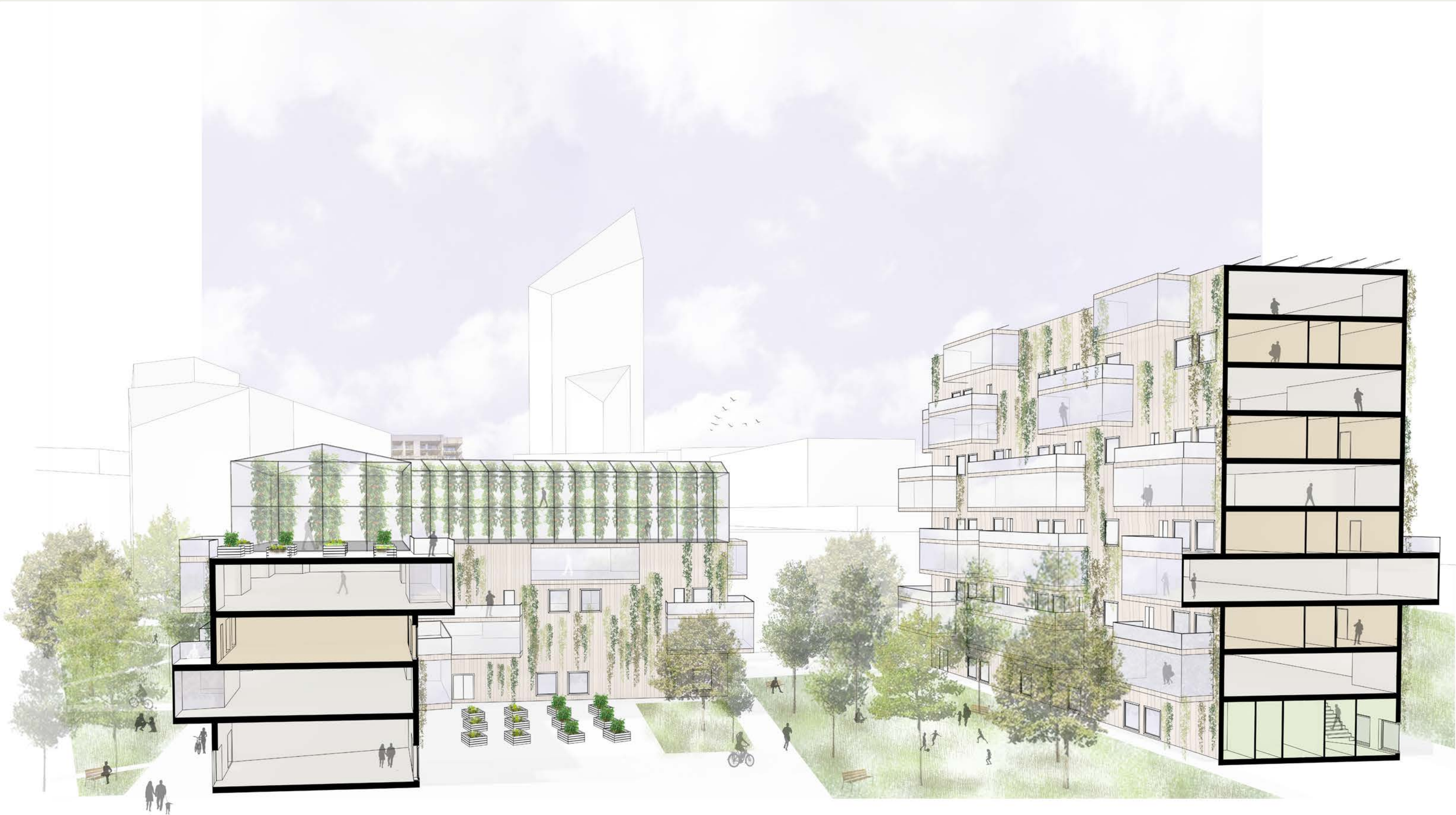
FLOOR PLAN MOBILITY HUB

MIXED FUNCTIONS





FUNCTIONS OF A BLOCK



GREEN HOUSE



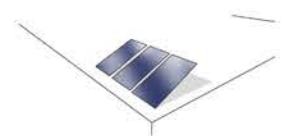
RAISED BEDS



EXISTING TREES



GREEN FASSADES



SOLAR PANELS



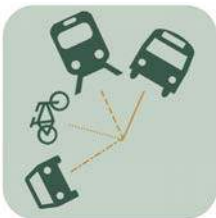




FOOD PRODUCTION

producing food for the residents
and for the restaurants in the area

- > there are areas available to grow food in green houses or partly in the park
- > areas for raised beds
- > offering slow food / markets
- > support of a healthy lifestyle



APP

Green Mobility - we connect
car sharing / car pooling / Public Transport

Packages for different services

- > rent a car
- > rent a bike/e-bike or scooter
- > buy tickets for public transport

Point system:

everytime you use a service from the mobility hub,
you will receive certain points for „Goodies“
for example, a free coffee

Advantages:

- reserved spots in the city for green mobility
- Goodies



GREEN ENERGY/ RENEWABLE ENERGY



Advantages of renewable energy:

- lower CO2 emissions -
- dependence on fossil fuels decreases -
- environment friendly energy -

SOLAR ENERGY:

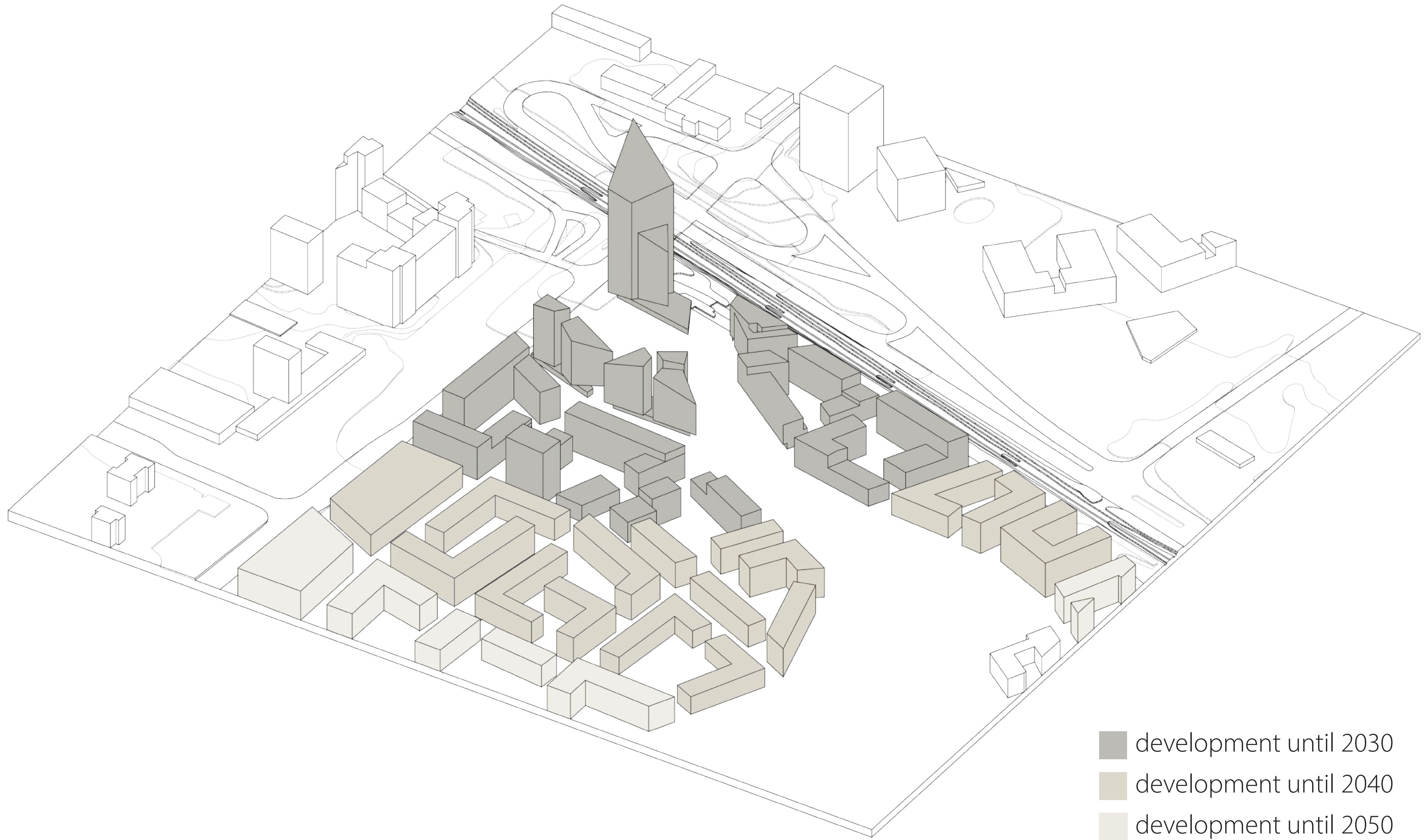
- direct use of solar energy, doesn't have to be saved -
- unsability on nearly all surfaces -
- as long as it is bright outside the system will work -

Oppertunities of HIGHTECH SOLAR CELLS:

- screen of smarthphones and tablets -
- top of the car -



FUTURE DEVELOPMENT





THANK YOU