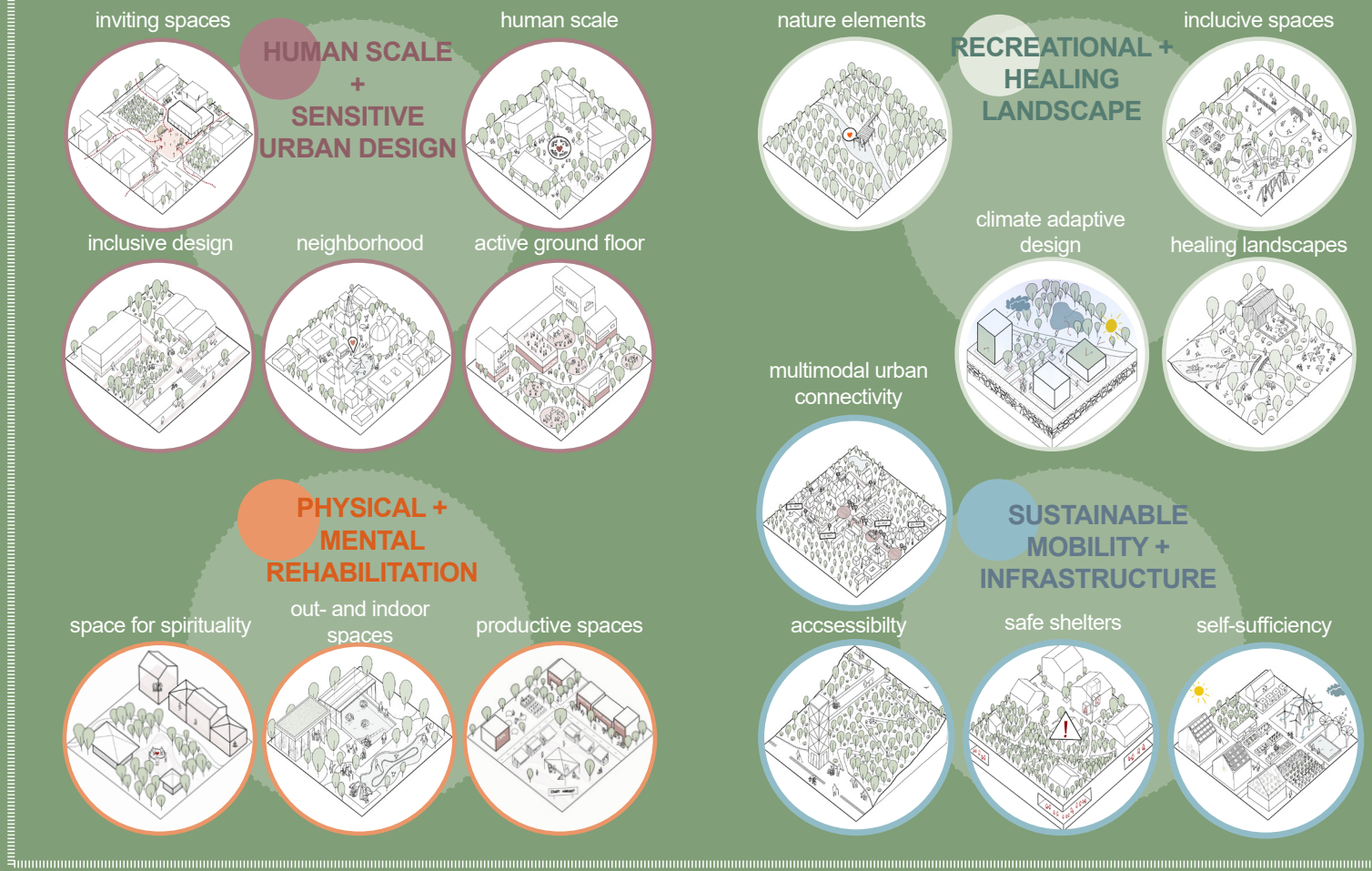
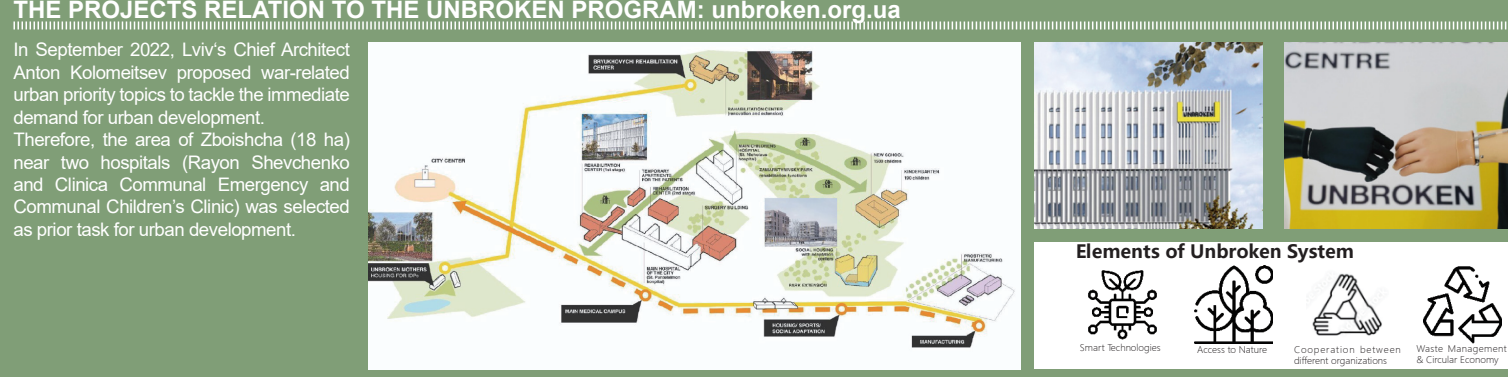
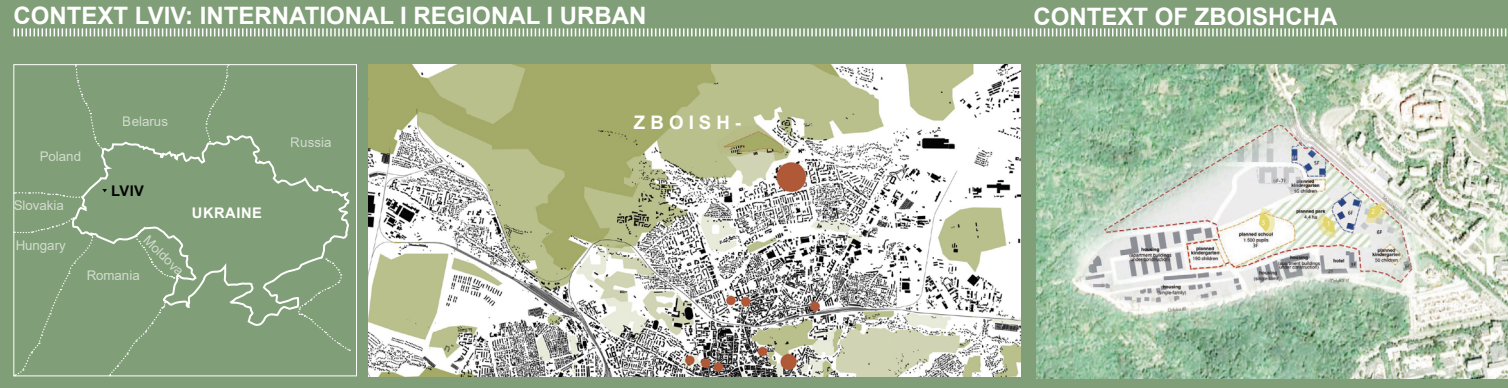


DESIGN PRINCIPLES FOR REHABILITATION SPACES DIDACTIC: OCT 2022 / MARCH TO JUNE 2023



LOCATION ZBOISHCHA & REQUIREMENTS



Lviv Social Resilient City: Urban Density Lab Zboishcha Quarter for mental and physical Rehabilitation 2022-23

TU WIEN **LVIV** **UNBROKEN** **Department of Urban Planning**

Städtebau TU Wien **Office of architecture and urban planning** **MIA**

Department of Architectural Design **Federal Ministry Republic of Austria Education, Science and Research** **oead**

Impressum
Department of Urban Design / FB Städtebau, TU Wien
Karlssplatz 13/260-01, A-1040 Wien | stb@tuwien.ac.at
www.vienna-lviv.info | www.staedtebau.at

Editors
Bohdan Cherkes, Andreas Hofer, Anton Kolomeitsev, Andrea Überbacher, Solomiya Shchekholska Konyk

Concept Andreas Hofer, Andrea Überbacher

Cover Image
Marika Ehara, Polina Dobynda, Roberta-Andreea Manea

Grafikdesign & Layout Diana Polanski

The Ukrainian urban landscape is facing radical changes due to the on-going war situation: While in Eastern and Southern cities of Ukraine war continues to rage, cities in the Western hinterland are facing significant challenges to tackle all war-related effects. These effects are, for instance, the urgent demand for new housing and healing infrastructure, due to massive inner-Ukrainian population flows. The city of Lviv (German: Lemberg) in West Ukraine with a population of 750.000 inhabitant is one of these cities playing a significant role as so-called "Backup-City" in the West.

staff housing; educational and leisure facilities. In addition, green spaces in the neighborhood itself as well as connecting the green with existing park areas of the initial city are particularly relevant to the design.

Lviv Social Resilient City was an academic project of TU Wien and Lviv Polytechnic National University in cooperation with the Lviv City Council Office of Architecture & Urban Planning. 67 architecture students and 16 tutors and guest reviewers worked together on this laboratory urban design project from October 2022 to July 2023. This folder presents the final results of ten-month working process of TU Wien students.

Lviv Social Resilient City was organised in the framework of the academic partnership between TU Wien and Lviv Polytechnic National University with financial support by the Austrian Ministry of Education, Science and Research.

Participants
TU Wien: Elisabeth Arzberger, Qela Dielza, Claudia Gómez Bris, Karoline Herdin, Chenhui Jiao, Dennis Johanness, Melanie König, Caroline Lechner, Rina Limani, Lisbeth Martinz, Diana Polanski, Laura Sánchez Fernandez, Anna Tili, Yuquan Wang; Polina Dobynda, Marika Ehara, Christoph Erking, Patrick Haingartner, Benjamin Holtz, Tristan Hunt, Alexandra Konstantinova, Mariia Purylyshyn, Sophia Lenikus, Sofia Lukyanchenko, Roberta-Andreea Manea, Karolina Marwitz, Hanna Müller, Elmaz Nasrulaeva, Anna-Lena Pfeufer, Chantal Maria Sahler, Taras Shandalovych, Katja Sippl, Laura-Marie Sipple, Zinat Tashpulatova, Liliya Velikova, Günther Wimmer, (students); Julian Chaplinsky, Christian Giger, Anasztazia Hujvan, Andre Krammer, Magdalena Maierhofer, Norbert Trolf (guest reviewer); Andreas Hofer, Andrea Überbacher (lecturers).

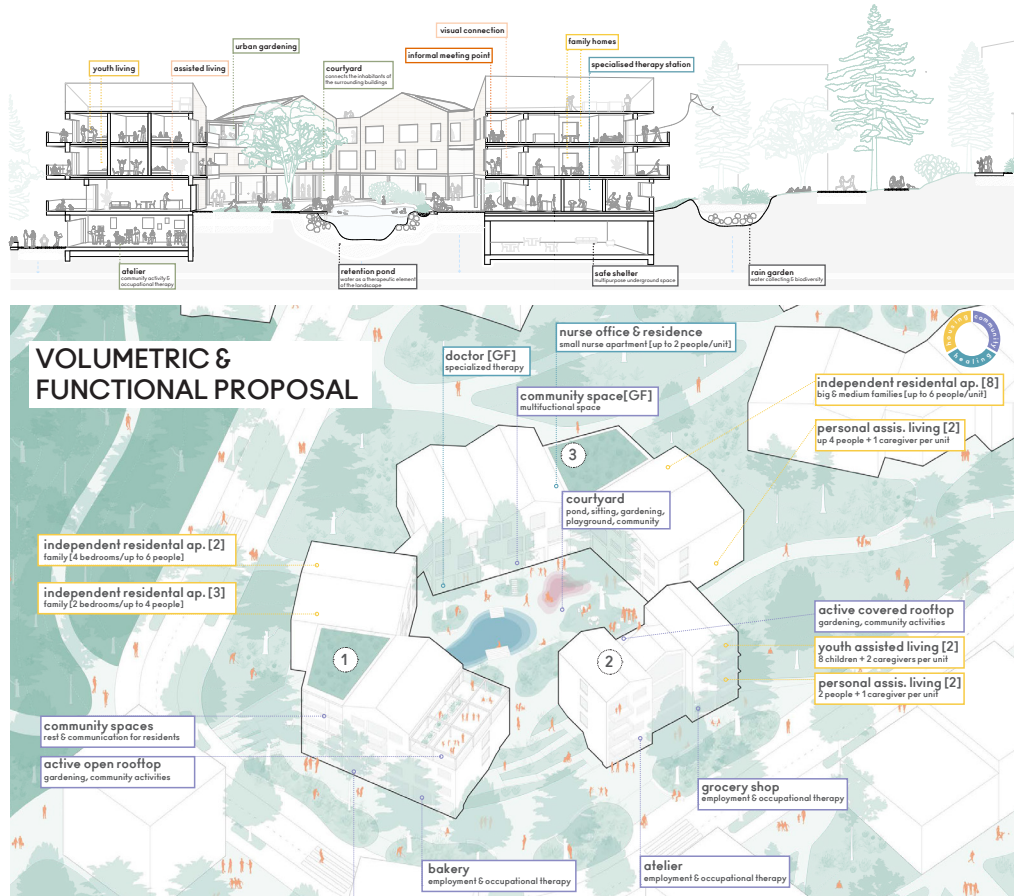
Lviv Polytechnic National University: Ivan Dudkevych, Albert Habriella, Kristina Horodniuk, Anastasiia Hrushytska, Ivan Kazakov, Vladena-Olena Kondzera, Kateryna Shkabar, Viktoriia Shpota, Taras Tenderiak, Yana Tepla, Ludmyla Tretinko, Mykhailo Zaritskyi, Antonia Banitska, Vladyslav Boichuk, Mykhailo Boriniak, Oksana Halchuk, Ivanna Hladii, Yuliia Holohan, Danylo Kachmar, Anton Kobzev, Anna Korol, Daria Kotvitska, Anton Kryvoruka, Andrii Lashchuk, Yurii Petryan, Ivan Pyatov, Mariia Plakhtyna, Anastasiia Rekuta, Viktoriia Senychak, Kyrilo Starov, Khrystyna Yaroshchuk (students); Bohdan Cherkes, Halyna Petryshyn, Solomiya Shchekholska Konyk, Yaryna Onufriv (lecturers).

Lviv City Council Office of Architecture & Urban Planning: Chief Architect Anton Kolomeitsev, Oleksandr Fenchuk, Maryna Peleshchak, Olena Tribusian.

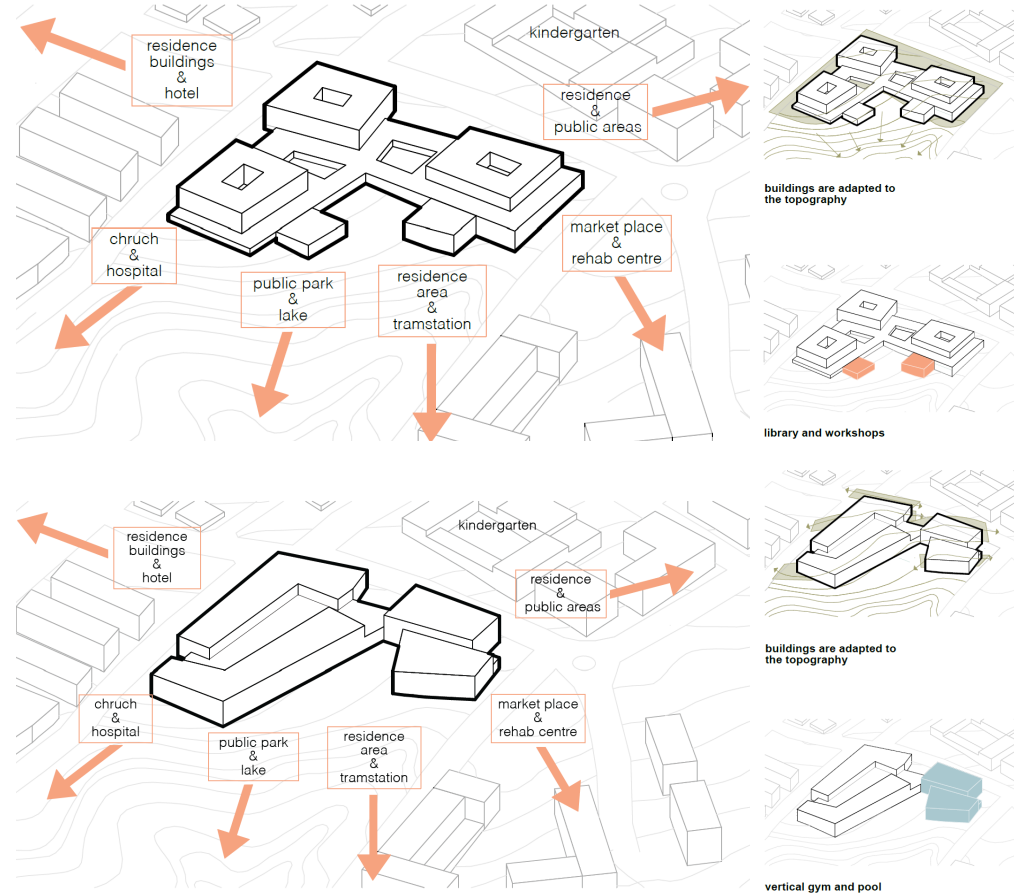
This publication is for academic use only and has no commercial purposes. © TU Wien, Wien 2023 | All rights reserved.



Laura Sánchez Fernández, Anna Panni Till
 This project aims to implement trauma-informed care in the centre of Zboishcha area. In the design a smart balance between volumes and open space supports the therapeutic healing processes.



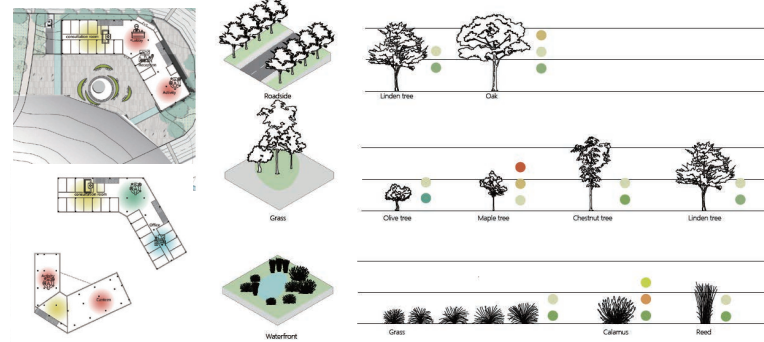
Karoline Herdin, Melanie König
 The two alternative school campus approaches "Double Cluster" and "Triple Cluster" differ in the diverse allocation of classrooms related to open spaces and sports facilities.



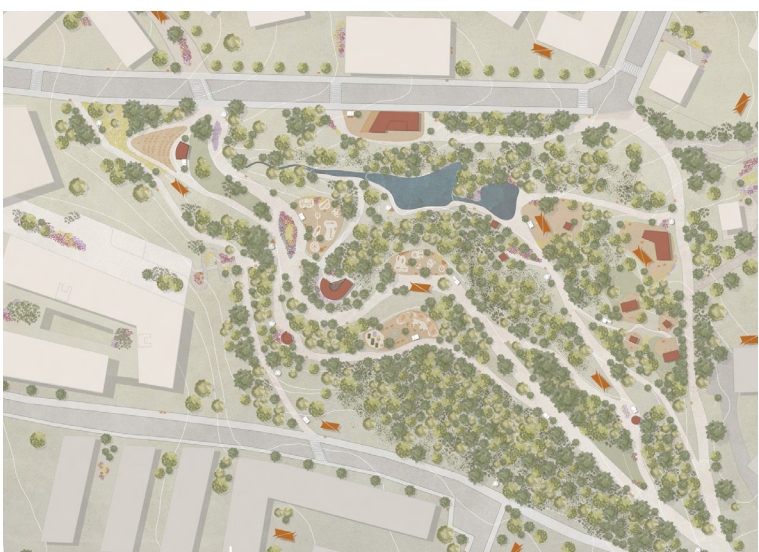
Lisbeth Martinz, Caroline Lechner
 This proposal focuses on the relation between physical/mental recovery and housing/public space, aiming for a functional well-designed neighborhood under difficult topographical conditions.



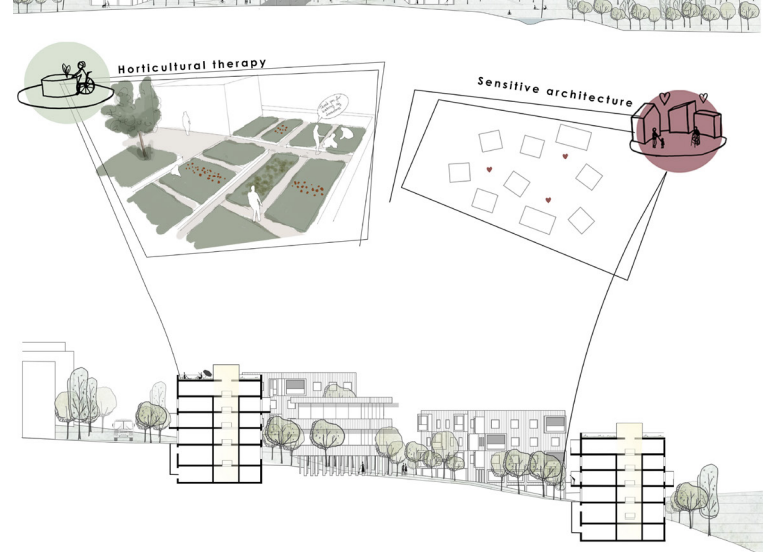
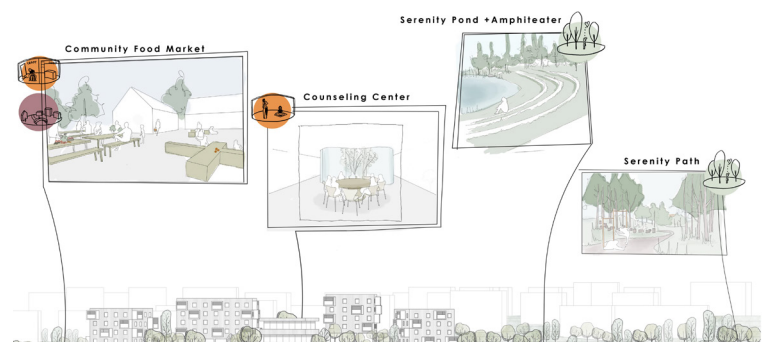
Jiao Chenhui, Wang Yuquan
 Re-lviv sounds like „relive“ of „relief“. The well-designed Rehabilitation Centre with assisted living and various green spaces supports the establishment of a safe, integrative, and peaceful community.



Elisabeth Arzberger, Claudia Goméz Bris
 This „public garden of healing“ holds a large variety of diverse functions such as calm and active spaces and retreat pavilions that are connected by a disabled-friendly network of pathways.



UPLIFTING NEIGHBORHOOD Diella Zela, Rina Limani
 The project aim is to create a small-scale housing structure for therapy in well-designed relation with its semi-public green spaces, which offer a variety of common activities.



THE WAY OF HEALING Diana Polanski, Dennis Johannsen
 This project elaborates on three different entry situations of Zboishcha area. The developed public space design of each entry supports either productive healing, natural healing or spiritual healing.

